



Disaster Debris Management Best Practices to Become and Stay Prepared



Introductions



Disaster Snapshot



2023 Flood: Debris Removal Operations- Cumulative Totals

Cumulative Total: 446 Loads / 6,230 Tons

C&D COMMERCIAL DEBRIS: 1,383 Tons

C&D RESIDENTIAL DEBRIS: 4,319 Tons

MOBILE HOME PARK DEBRIS: 214 Tons

ASBESTOS CONTAINING C&D: 5 Tons

RESIDENTIAL - VEGETATIVE/WOODY: 1,855 Cubic Yards

Contractor Vehicles (Trucks/Trailers): 16 Units

Temporary Flood-Related Hazardous Materials Collection Location – Middlesex, VT

July 29, 2023 – August 12, 2023

Summary

- Operated for **13** days.
- Collected **14,000** containers of flood-related hazardous waste from **24** Vermont towns.
- Served **219** total cars.
- Made **25** trips around the state to collect **8,292** containers of hazardous waste from flood impacted towns

Paint

- Collected **64** cubic yard boxes of paint under the Paint Care program.

Mercury Bulbs

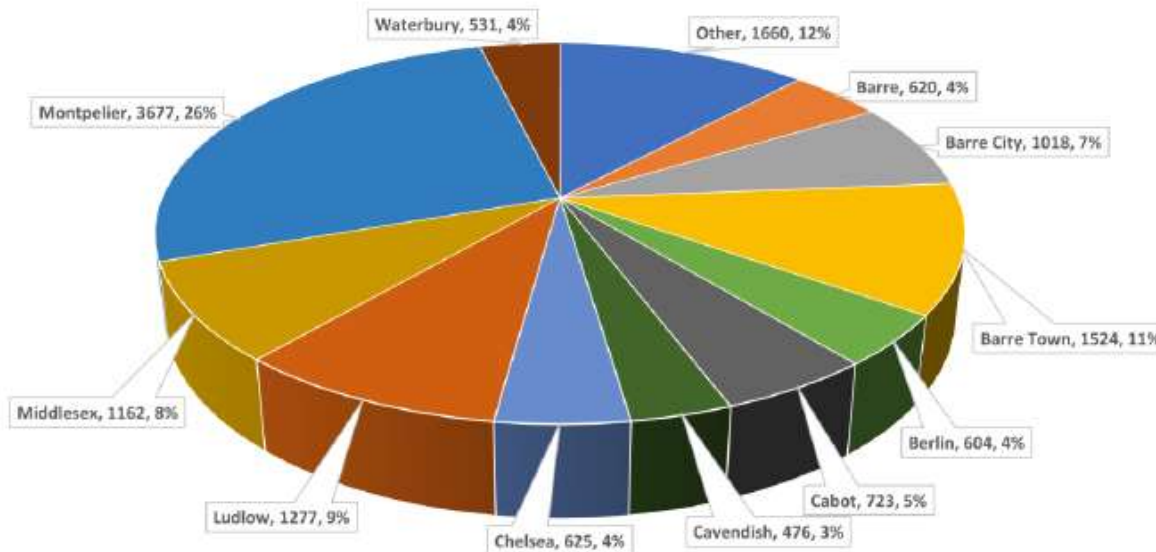
- 319** fluorescent bulbs were collected via the mercury program

	NO. OF CONTAINERS	TRIPS BY CONTRACTOR
29-Jul		
Barre Town	410	1
Waterbury	237	1
31-Jul		
Barre Town	537	2
1-Aug		
Barre Town	518	1
Montpelier	406	2
2-Aug		
Montpelier	598	2
3-Aug		
Barre Town	16	1
Montpelier	1200	2
4-Aug		
Chelsea	436	1
Ludlow	893	1
5-Aug		
Cabot	124	*
Ludlow	230	1
7-Aug		
Barre City	80	1
8-Aug		
Cavendish	476	1
Londonderry	62	1
Ludlow	154	1
9-Aug		
Barre City	43	1
10-Aug		
Cambridge	321	1
Montpelier	477	1
11-Aug		
Barre City	135	1
Montpelier	270	1
12-Aug		
Cabot	595	*
Hardwick	74	1
Grand Total	8292	25

* Self-transported by NEK Solid Waste Mgmt District

Date	Cars
29-Jul	6
31-Jul	17
1-Aug	12
2-Aug	7
3-Aug	13
4-Aug	12
5-Aug	7
7-Aug	4
8-Aug	9
9-Aug	22
10-Aug	29
11-Aug	37
12-Aug	44
Grand Total	219

2023 FLOOD RELATED HAZ WASTE COLLECTION PROGRAM PARTICIPATION
(Town, No. of Containers, Percent of Total)







Montpelier- BEFORE



Montpelier- BEFORE



Montpelier- BEFORE



Montpelier- BEFORE



Montpelier- BEFORE



Montpelier- BEFORE



Montpelier- BEFORE



Montpelier- BEFORE



Montpelier- AFTER



Montpelier- AFTER



Montpelier- AFTER



Montpelier- AFTER

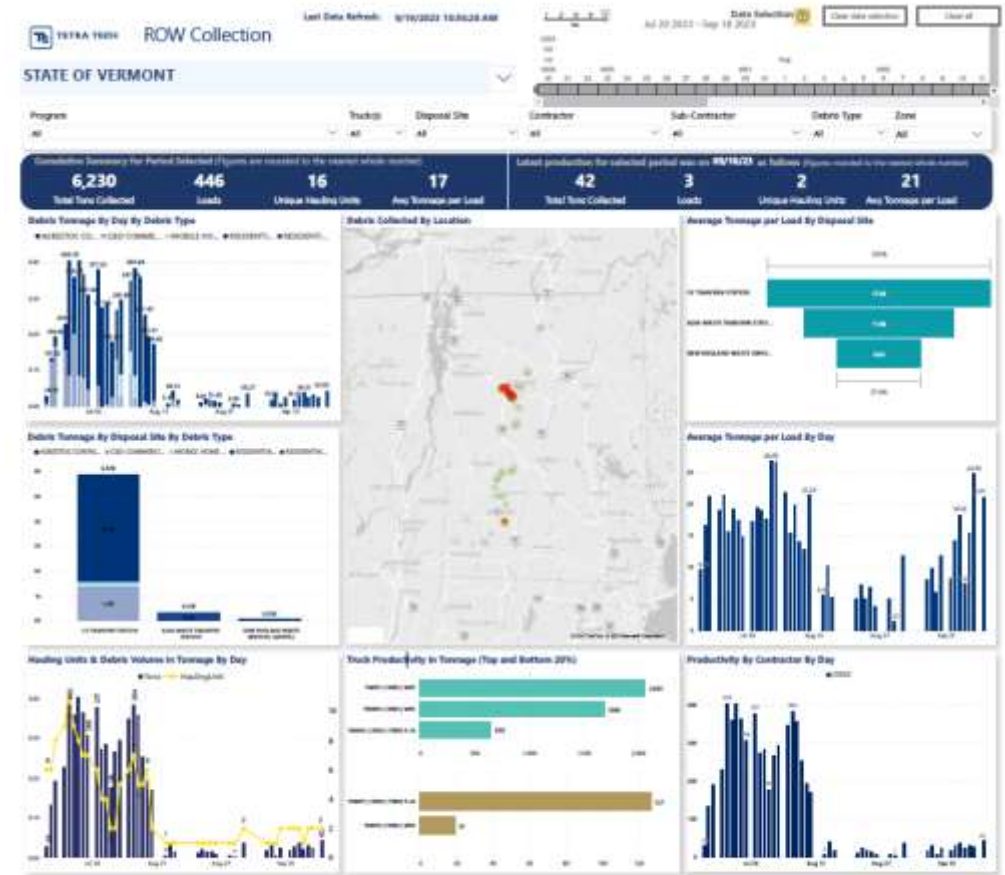
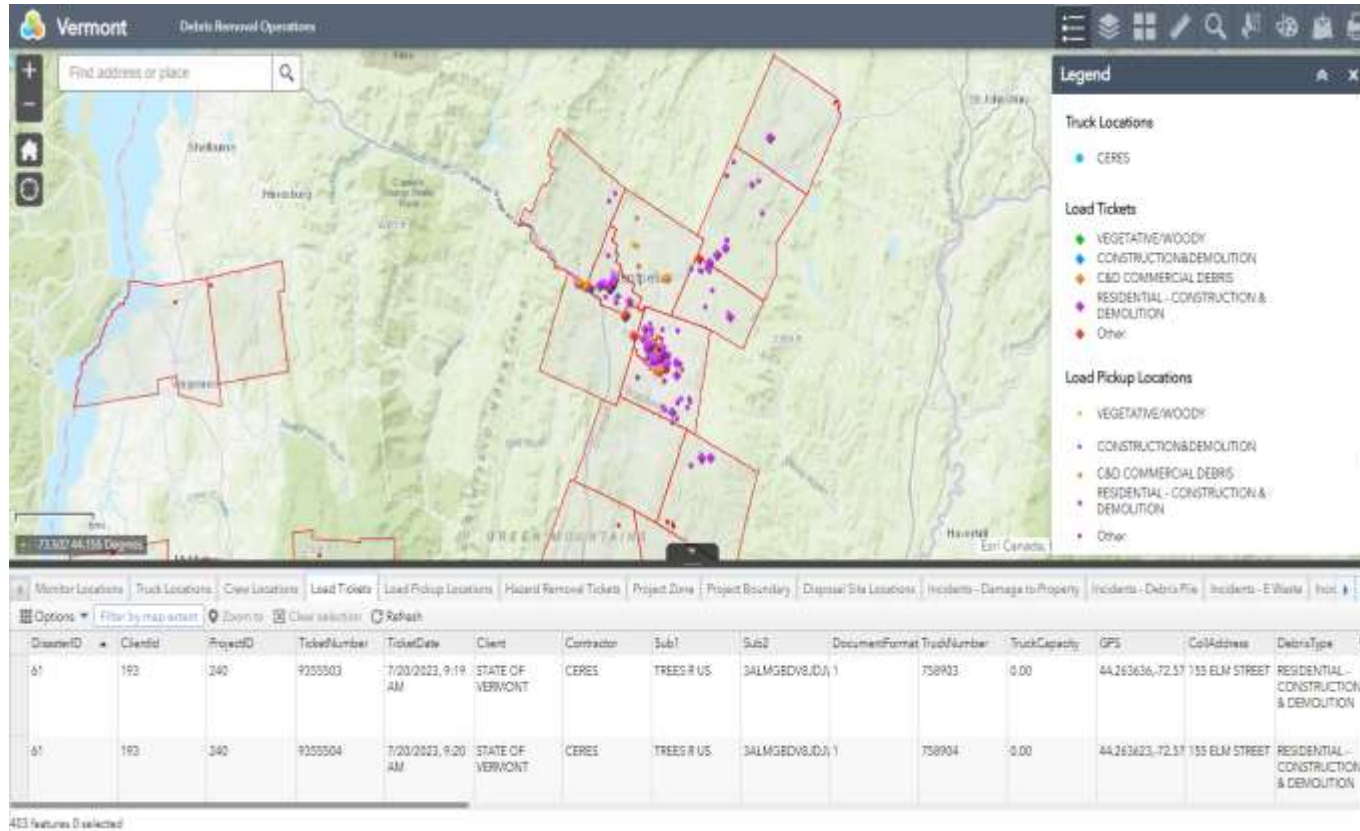


Customizable Reports

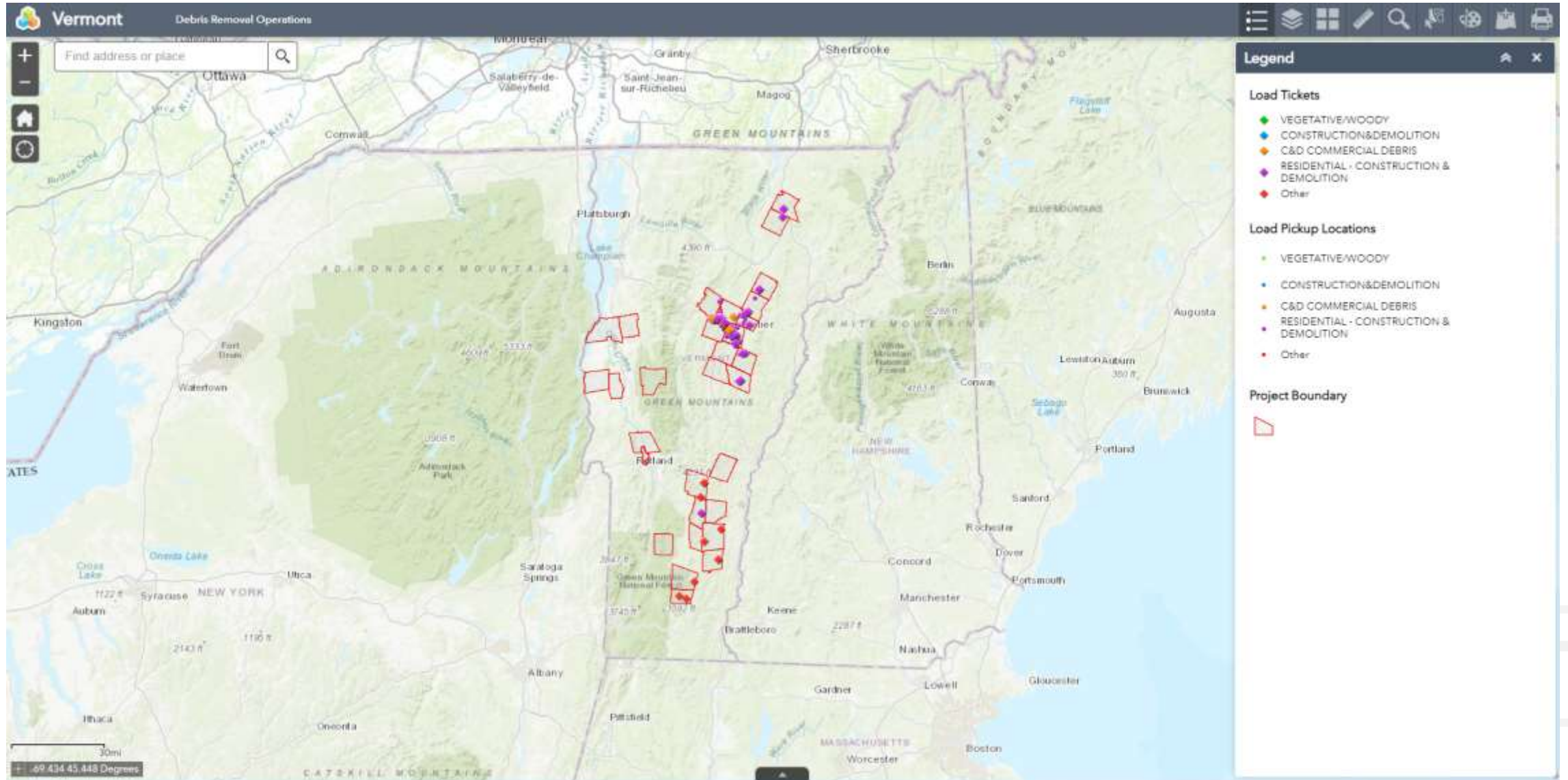
Geoportal Debris Tracking



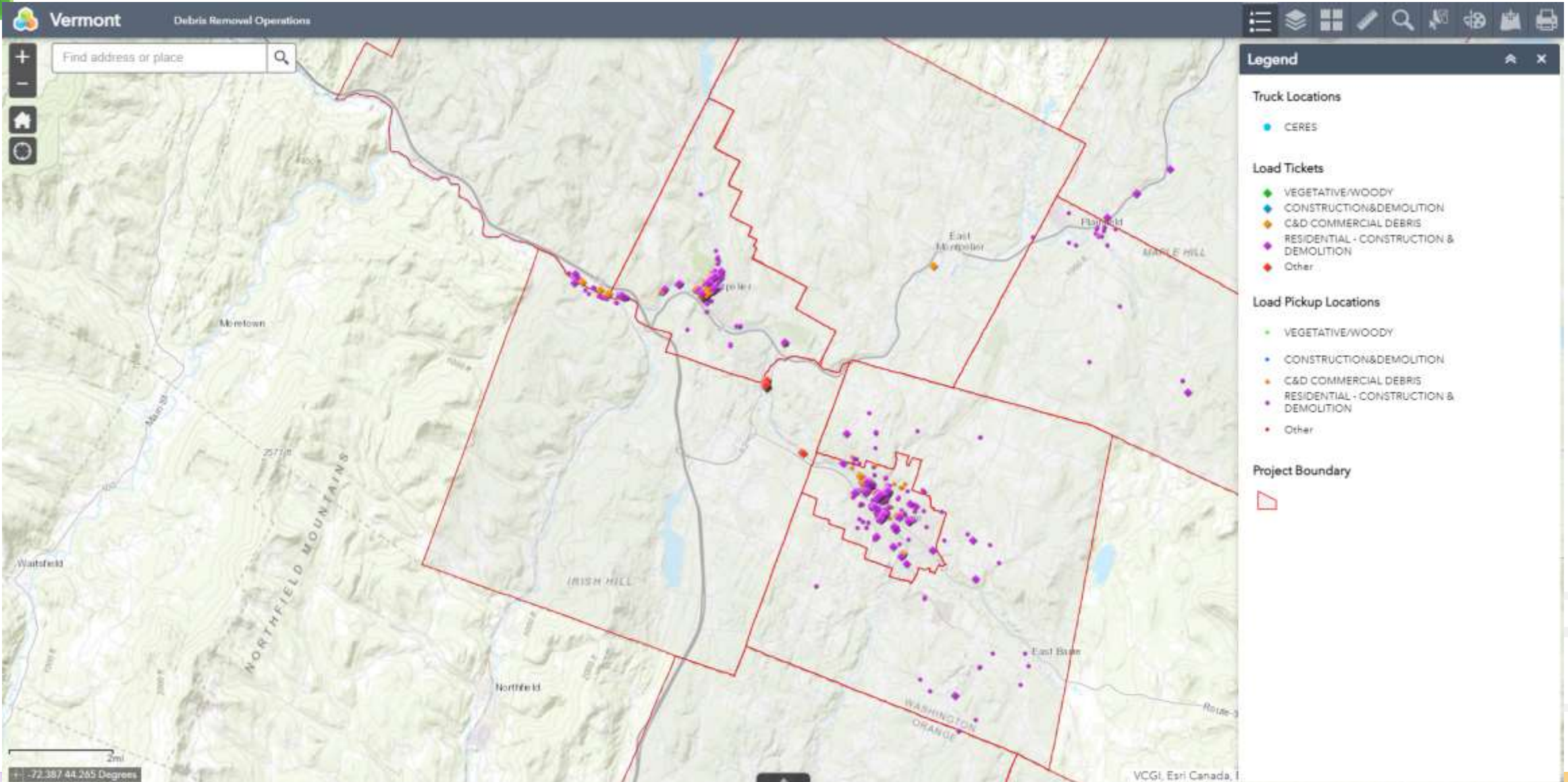
Custom Reporting



Truck Locations, Boundaries, Load Tickets and Debris Type



Truck Locations, Boundaries, Load Tickets and Debris Type



Lessons Learned



Issues for Discussion

Commercial Debris Removal

Private Property Debris

Categorical Disposal

Tonnage vs. CY

Capacity at Disposal Sites

Farmers Fields/Agricultural

Household Hazardous Waste

Role of EPA

Spill Teams

Waterway Debris

Role of NRCS