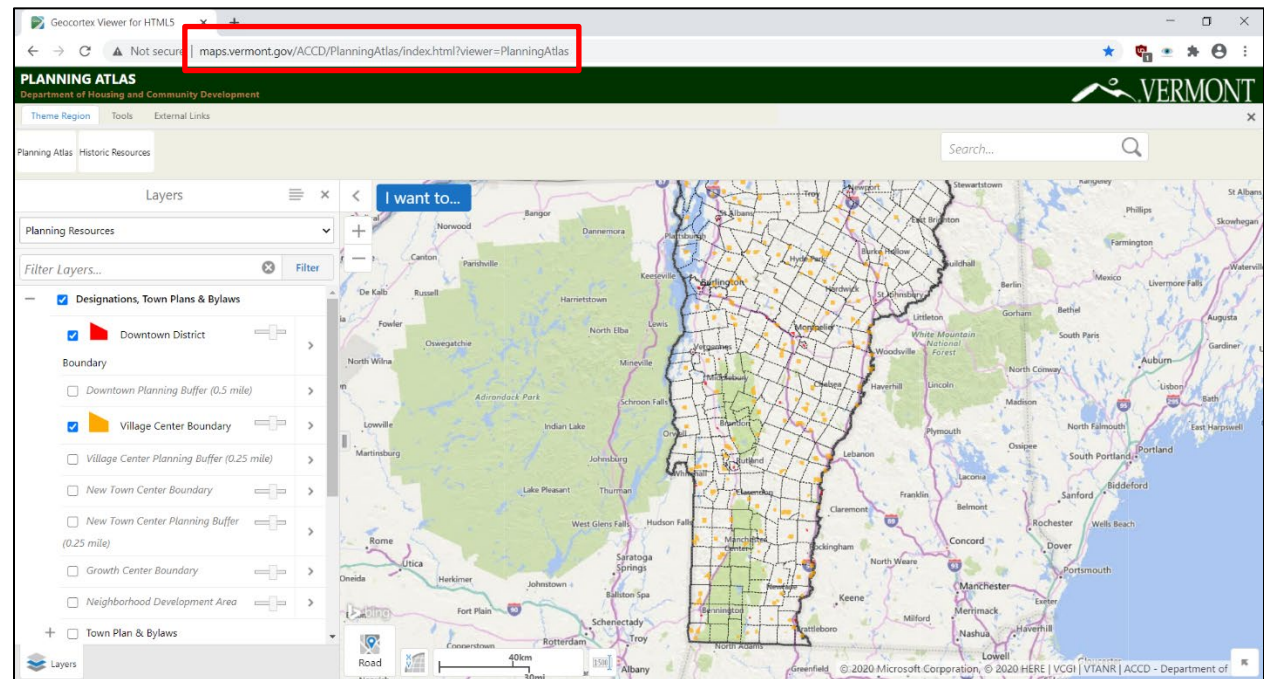


ELT 1: Homework 2

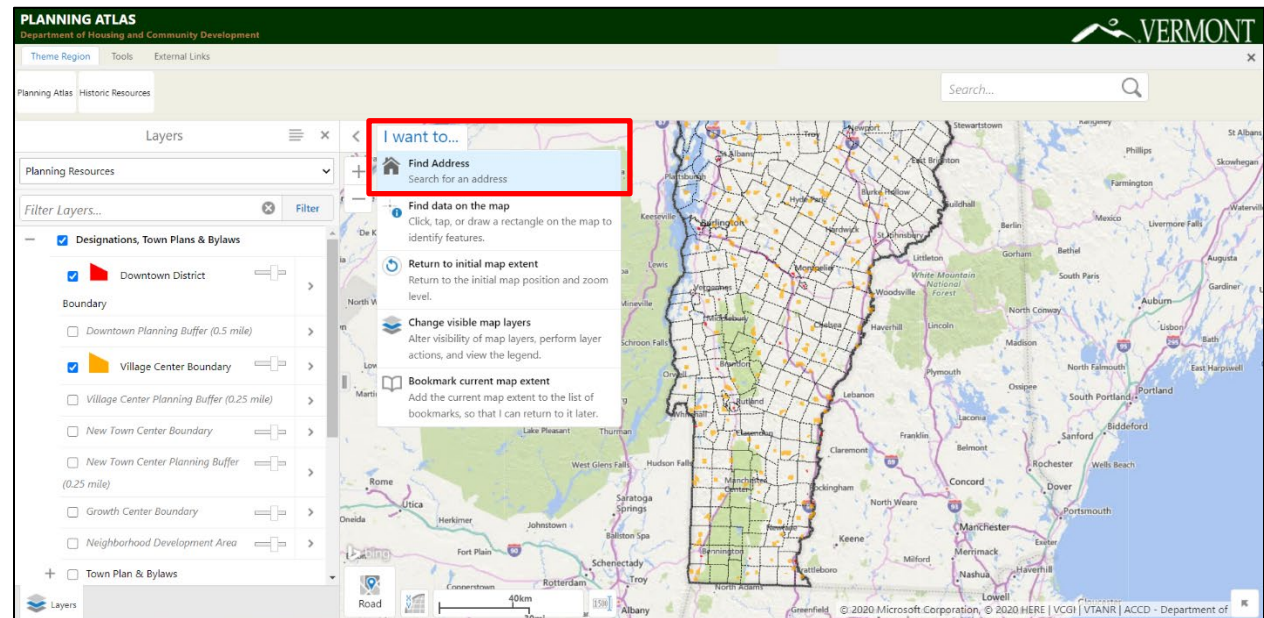
Using the VT Agency of Commerce & Community Development's Planning Atlas

Open a web browser and navigate to

<http://maps.vermont.gov/ACCD/PlanningAtlas/index.html?viewer=PlanningAtlas>

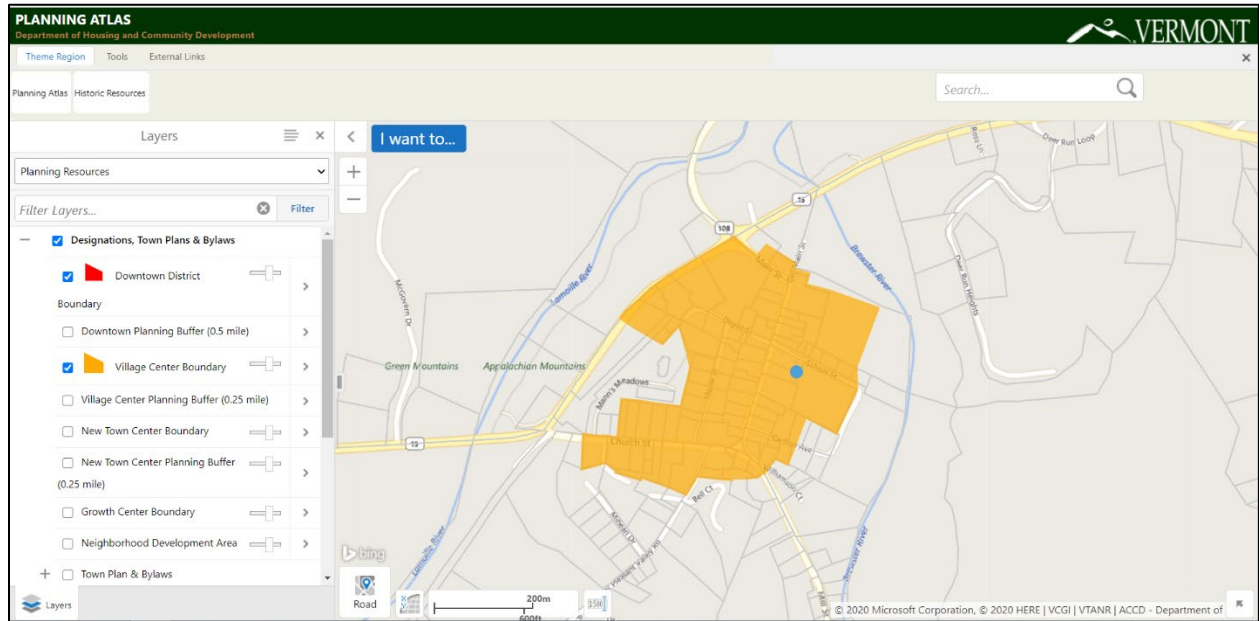


Find the “I want to...” and click “Find Address.”



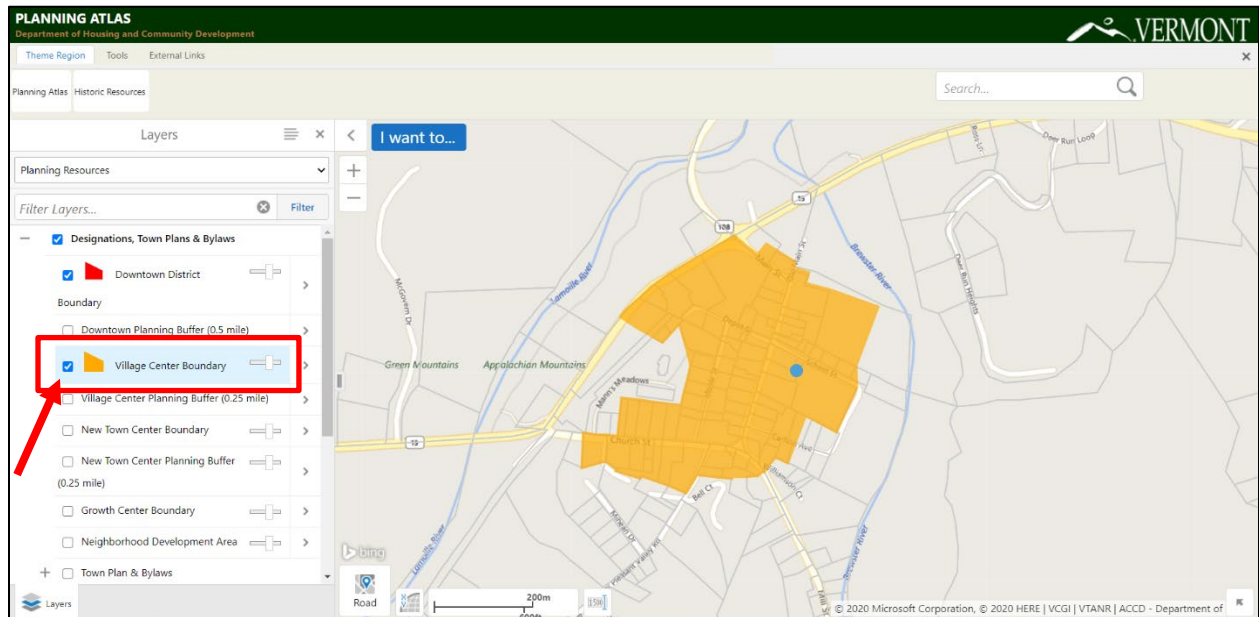
Enter your address (Example = 50 School St Cambridge).

If the Find Address tool does not work, simply pan around (left click and hold the button, while moving your mouse) and zoom (using the scroll wheel of your mouse) to your town.

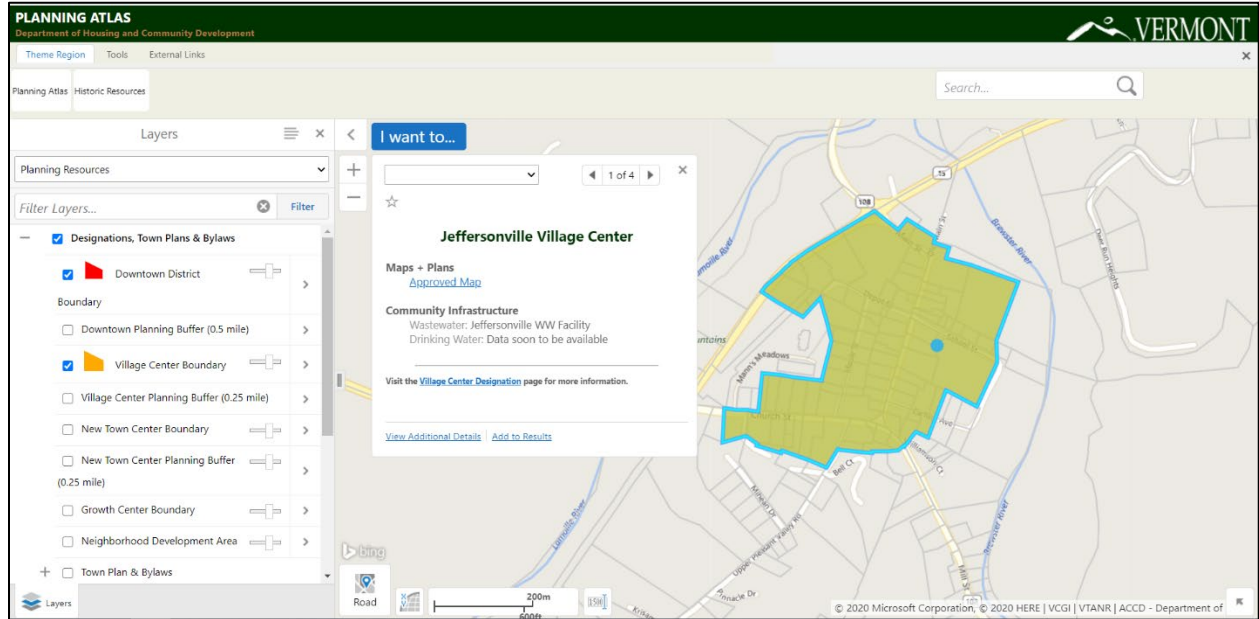


In the data layer menu, locate the **Designations, Town Plans & Bylaws** section. This section contains several useful data layers relating to designations that may exist within your town.

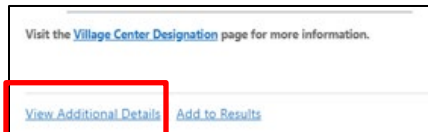
Pan around the map of your town to scan for any designation areas. Only the data layers that are turned on in the Layers menu (with a check box beside them) are displayed on the map at right.



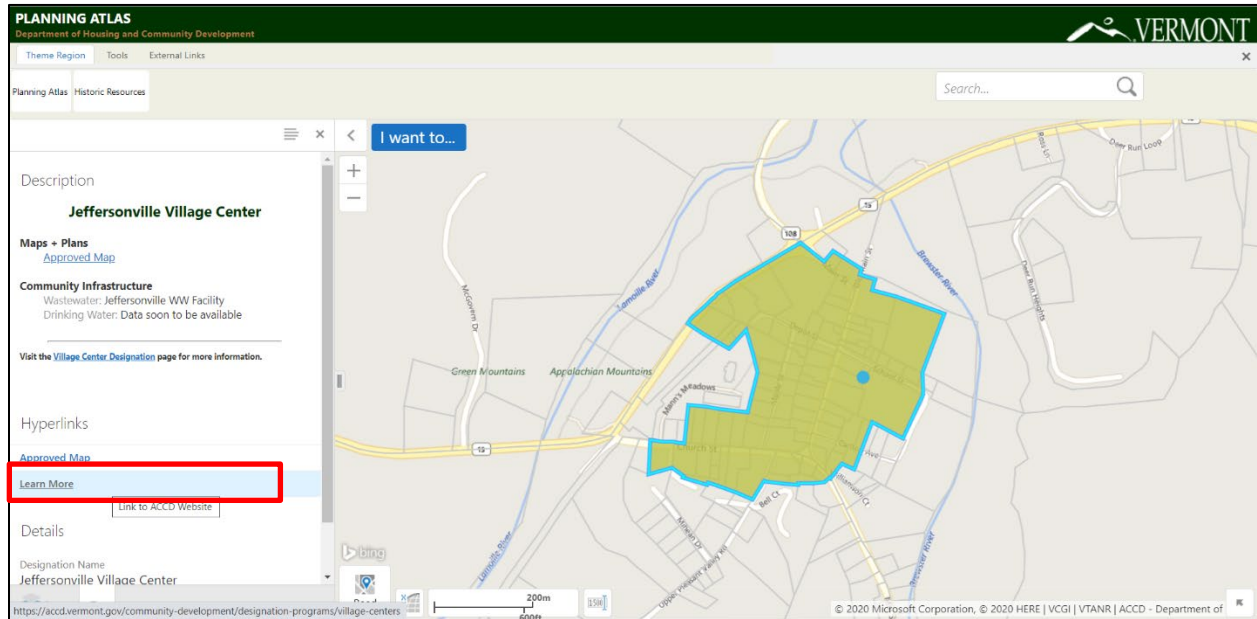
Left click on a place of interest within one of the color shaded “Designation Areas” to bring up more information in the results pane.



Click “View Additional Details” in the lower left corner of the results box.

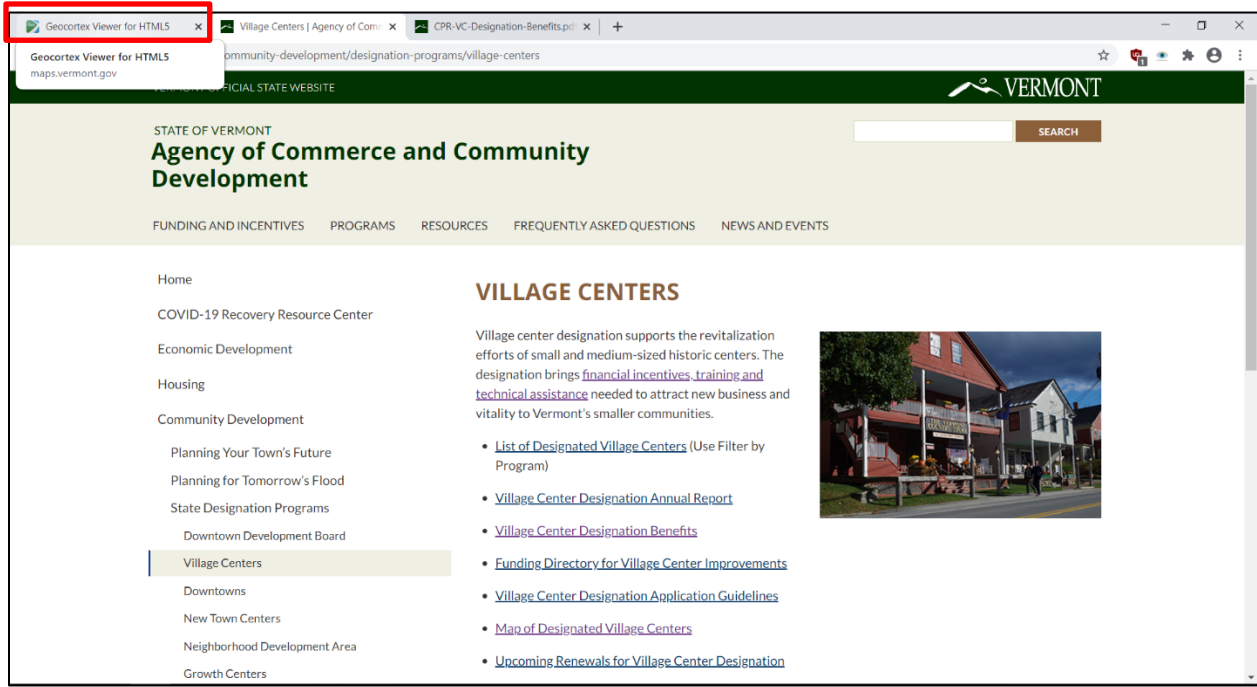


Now click the “Learn More” link to find out about the benefits of various State Designation Programs.

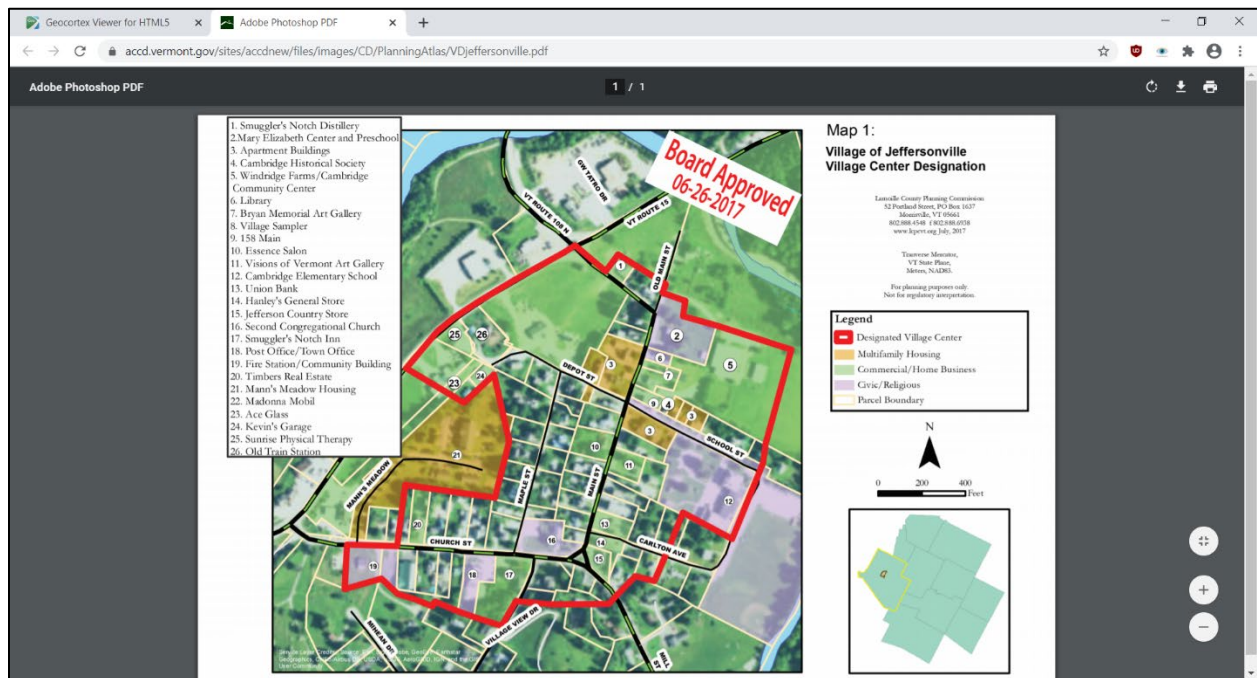
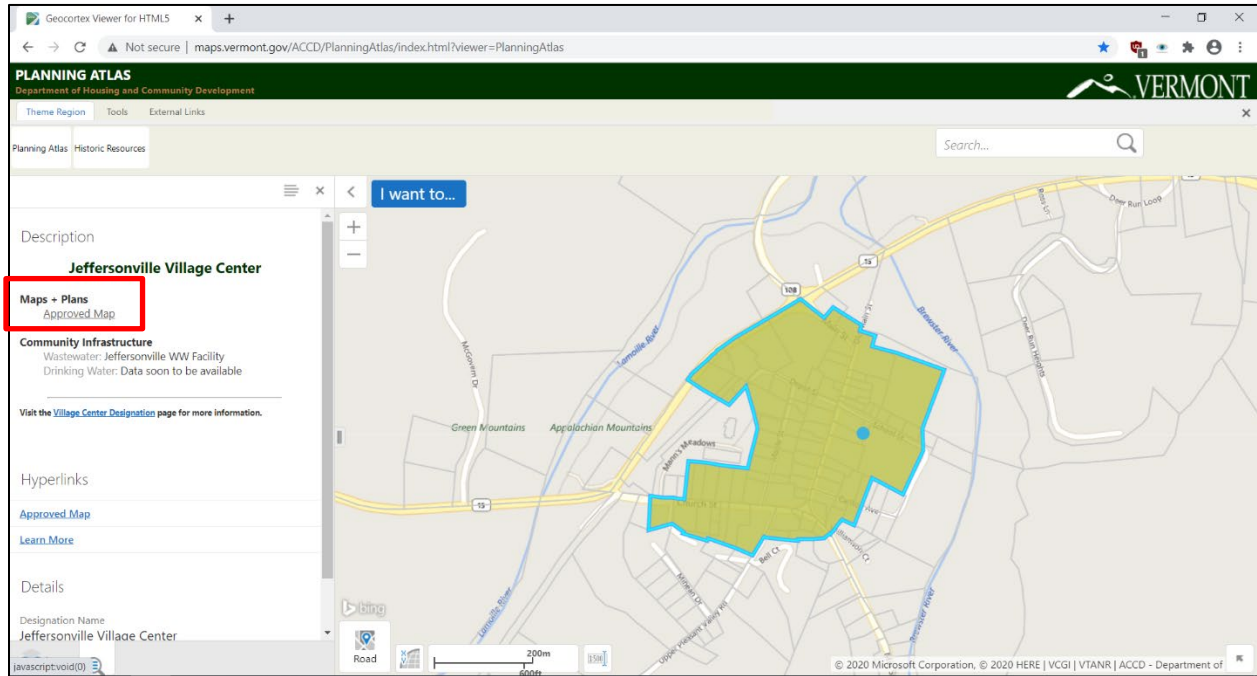


Read about each of the designation programs, and be sure to see the “[Overview of State Designation Program Benefits](#)” which highlights a number of financial incentives and regulatory benefits.

Click on the Tab labeled “Geocortex Viewer for HTML5” at the top of your browser to get back to the Planning Atlas.

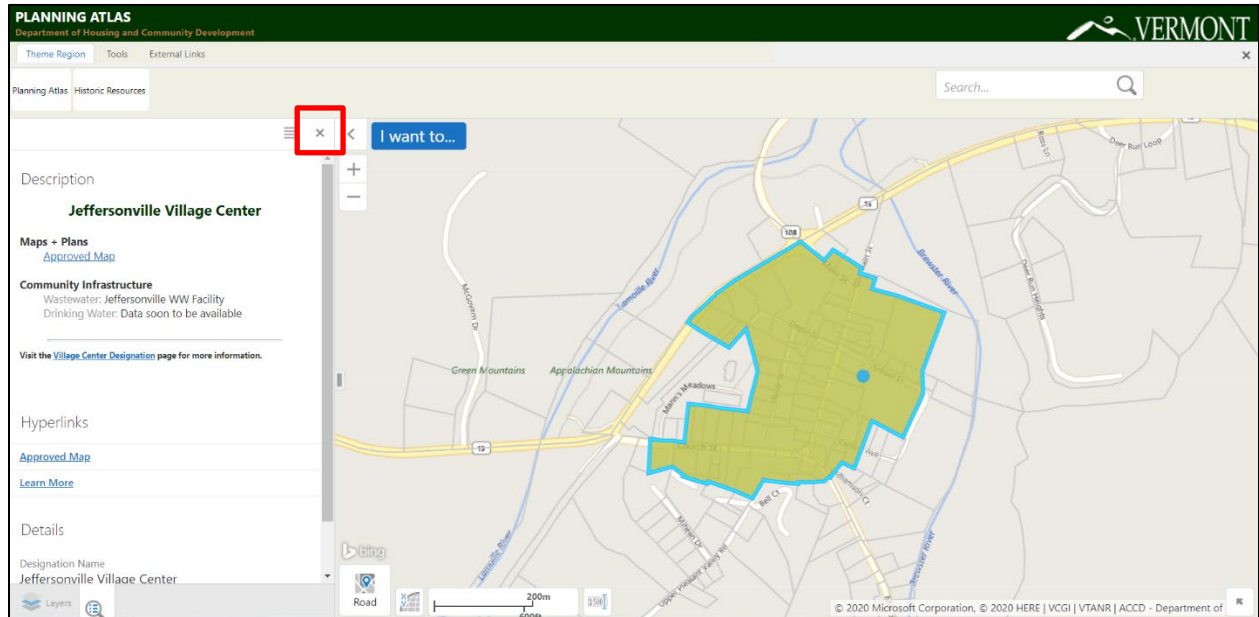


Now click on the **“Approved Map”** link to see the planning map of the designated area.



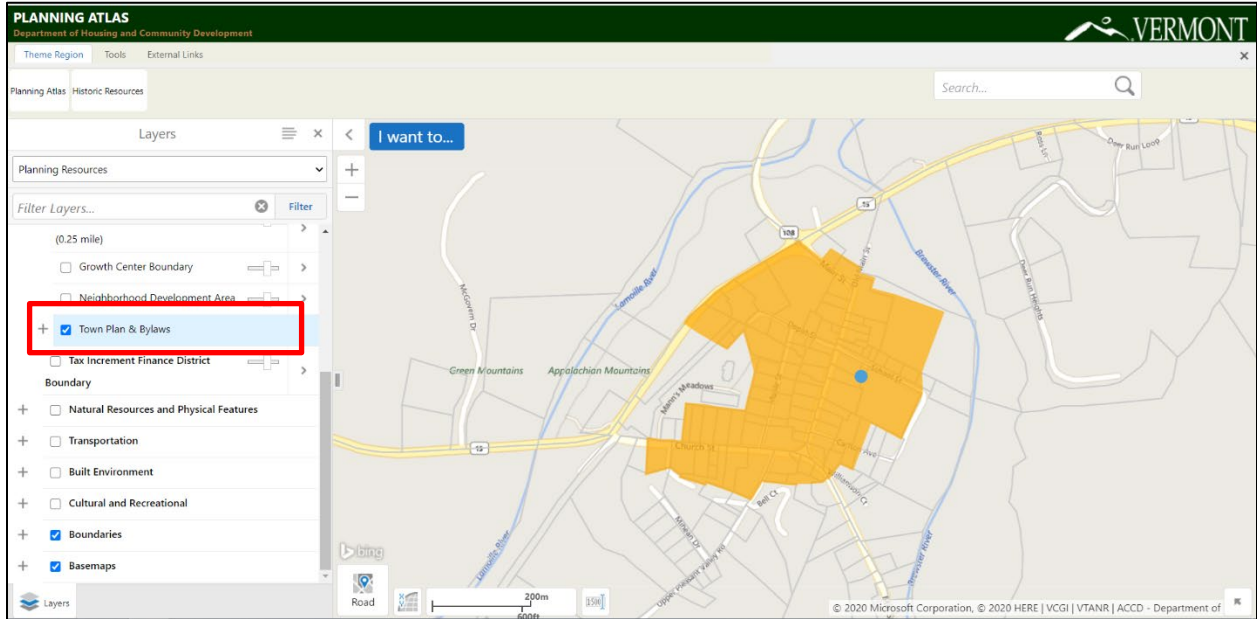
When you are finished reviewing the planning map, return to the VT Planning Atlas tab in your web browser.

Close the Village Designation results by clicking on the “X” in the top right corner of the menu bar.

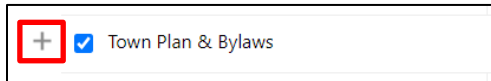


Continue exploring other Designation types in your town or area of interest.
Pan around the map to see if any other designations affect your town or area of interest.

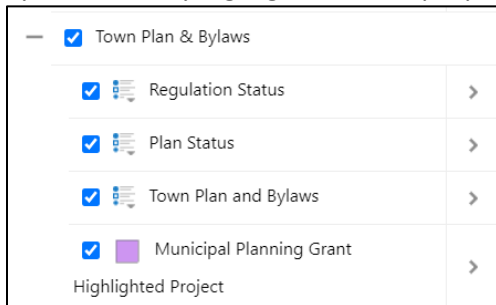
Turn off the other layers (click on the check mark box to unselect) and turn on the “**Town Plan & Bylaws**” data layer.



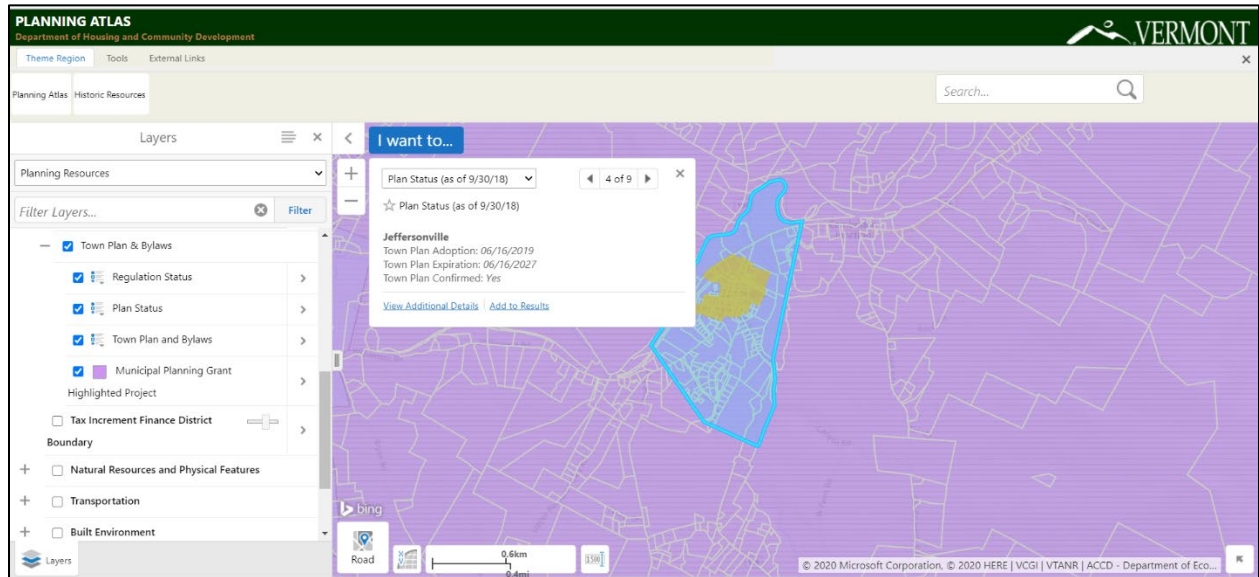
Click the “+” to the left of the **Town Plan & Bylaws** data layer to expose hidden data layers.



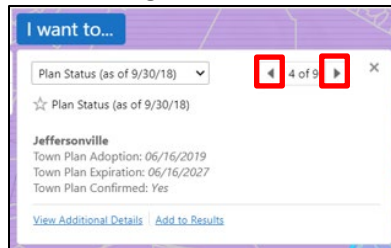
Next, try turning on different data layers to explore different attributes of your town’s regulations, plan, bylaws, and any highlighted municipal planning grant projects.



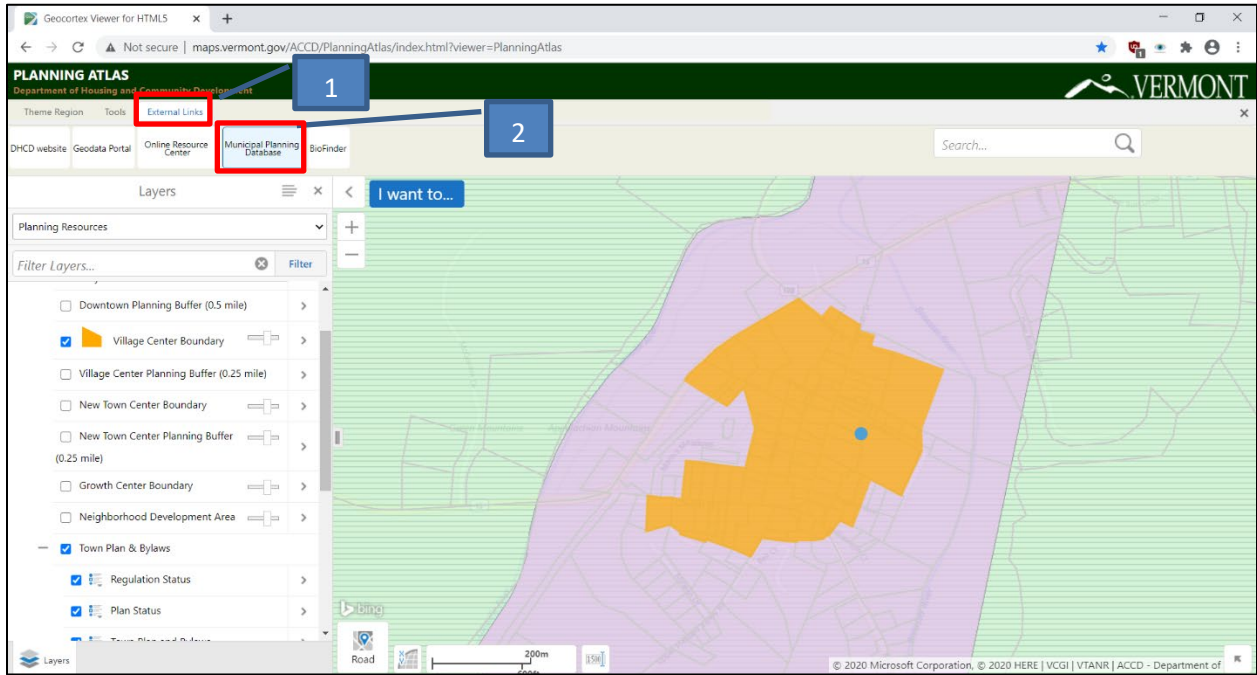
Now, **left-click** on the map. The results box here shows 9 different data results from the various data layers that are turned on. Here, you can see details on the Plan Status of Jeffersonville, which adopted a Town Plan in 2019 that will be in effect until 2027. Your results box may look a little different, depending on how many and which data layers are turned on now.



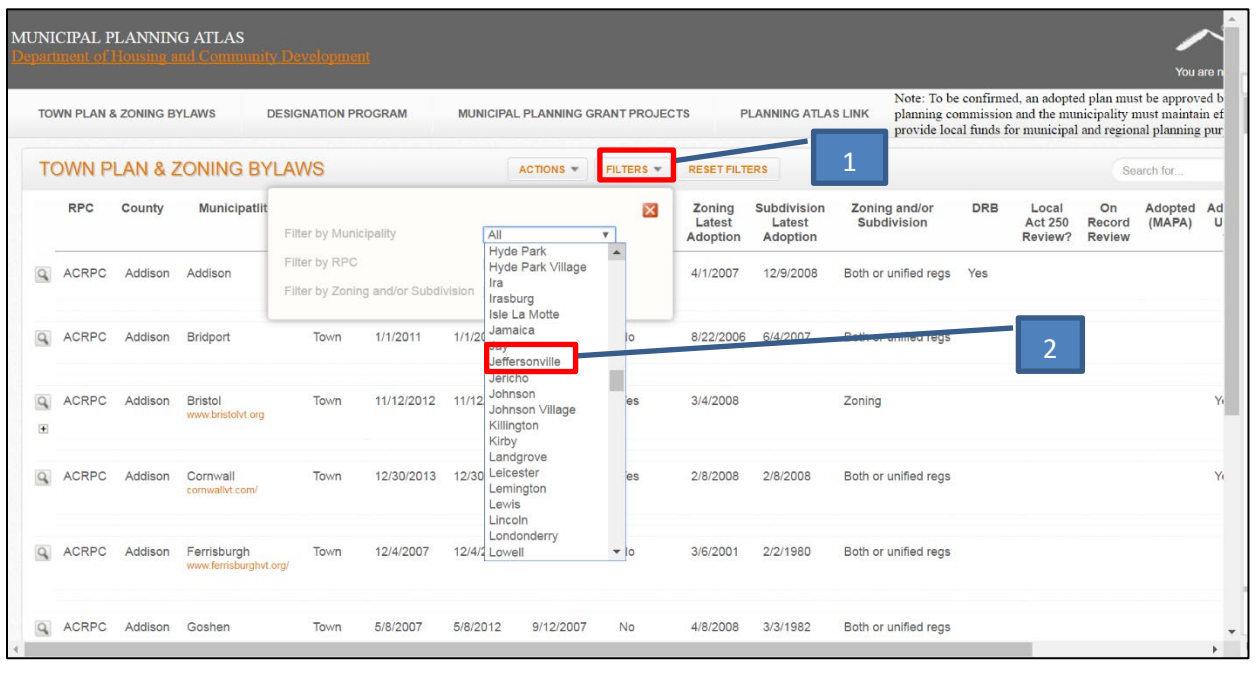
Scroll through the different results by clicking on the right and left arrows inside the results box.



The Planning Atlas also contains links to other valuable resources. Click the “External Links” tab and then click the link to the Municipal Planning Database.



Once the database opens in your web browser, find your town in the “Town Plan & Zoning Bylaws” Tab by using a filter.



Click on the “**Municipal Planning Grant Projects**” tab to see if your town or neighboring towns have received a Municipal Planning Grant. Read the Project Descriptions to see if any existing projects are similar to what you might envision your town doing.

MUNICIPAL PLANNING ATLAS
Department of Housing and Community Development

VERMONT
You are not signed in. SIGN IN

TOWN PLAN & ZONING BYLAWS DESIGNATION PROGRAM **MUNICIPAL PLANNING GRANT PROJECTS** PLANNING ATLAS LINK

Note: To be confirmed, an adopted plan must be approved by planning commission and the municipality must maintain and provide local funds for municipal and regional planning purposes.

MUNICIPAL PLANNING GRANT PROJECTS

Highlighted Project	Municipal Name	Project Title	Project Description	Total Cost	State Fund	Match Fund (minimum requirement)	Match Fund (actual)	Grant Products	Work Plans	More Information
<input checked="" type="checkbox"/>	Addison	Issue-oriented amendments to the Addison Town Plan - Land Use Plan Revision	This project seeks to evaluate constraints and opportunities for rural smart growth in the Town of Addison, with the end product of a revised land use plan and other updated mandatory elements, such as a flood resiliency element.	\$17,099.50	\$14,067.00	\$3,032.50		Link to Grant Products	Link to Application Workplan and Budget	Rural town plan, Density Based Zoning, Involved Selectboard and public in decision-making
<input checked="" type="checkbox"/>	Bennington	Downtown Bennington Area Wide Plan	The project combines two successful program models - VT Area Wide Planning and VDAT - to create a market study, site analyses, feasibility analyses, marketing plans and GIS-based inventory for key redevelopment properties in downtown Bennington.	\$26,000.00	\$20,000.00	\$6,000.00		Link to Grant Products	Link to Application Workplan and Budget	Brownfield Area Wide Plan, Downtown redevelopment, MPG leveraged other funds, Story Map, alternatives analysis with proformas, 300 involved in planning
<input checked="" type="checkbox"/>	Berlin	Drafting of Unified Bylaw-Subdivision Regulation Update	The Town will be assisted by a professional consultant to develop unified bylaws that will align future growth in keeping with the 2012 Town plan, with particular focus to update the Town's subdivision regulations with input from public outreach.	\$12,500.00	\$11,000.00	\$1,500.00		Link to Grant Products	Link to Application Workplan and Budget	Unified Land Use and Development Regulations with zoning district changes making rural/center distinctions. Simple

When you are finished with the Database, return to VT Planning Atlas tab on your web browser.

Explore other datasets in the Planning Atlas by expanding the group in the layers menu (click on the + sign) and turning on layers (by checking or unchecking boxes).

PLANNING ATLAS
Department of Housing and Community Development

VERMONT

Home External Links

Initial View Identify Print Export

Distance ACCD Disclaimer

Search...

Layers

1. Expand the group

2. Left click on a feature (that is turned on) to learn more about it.

Planning Resource Atlas

- Municipal Planning Grant Project
- TIF District Boundaries
- Boundaries
 - VT State Boundary
 - VT Towns
 - Regional Planning Commission Bou...
 - Parcels (unofficial data)
 - Natural Resources and Physical Features**
- Conserved Lands
 - River Corridors (Jan 2, 2015)
 - Rare Threatened Endangered Species
 - Flood Hazard Areas (Only FEMA-digiti...
 - Soil - Prime Agricultural

Information by best available data. Not shown: 50' setback on perennial streams with watersheds < 2mi2) For more information, please visit out Frequently Asked Questions page. Vt_River_Corridors_01_02_2015

Data provided by the Vermont Agency of Natural Resources.

View Additional Details | Edit Feature

bing

Layers

Road

200m 600ft

© 2017 HERE, © AND, © 20

Congratulations! You have completed this homework.