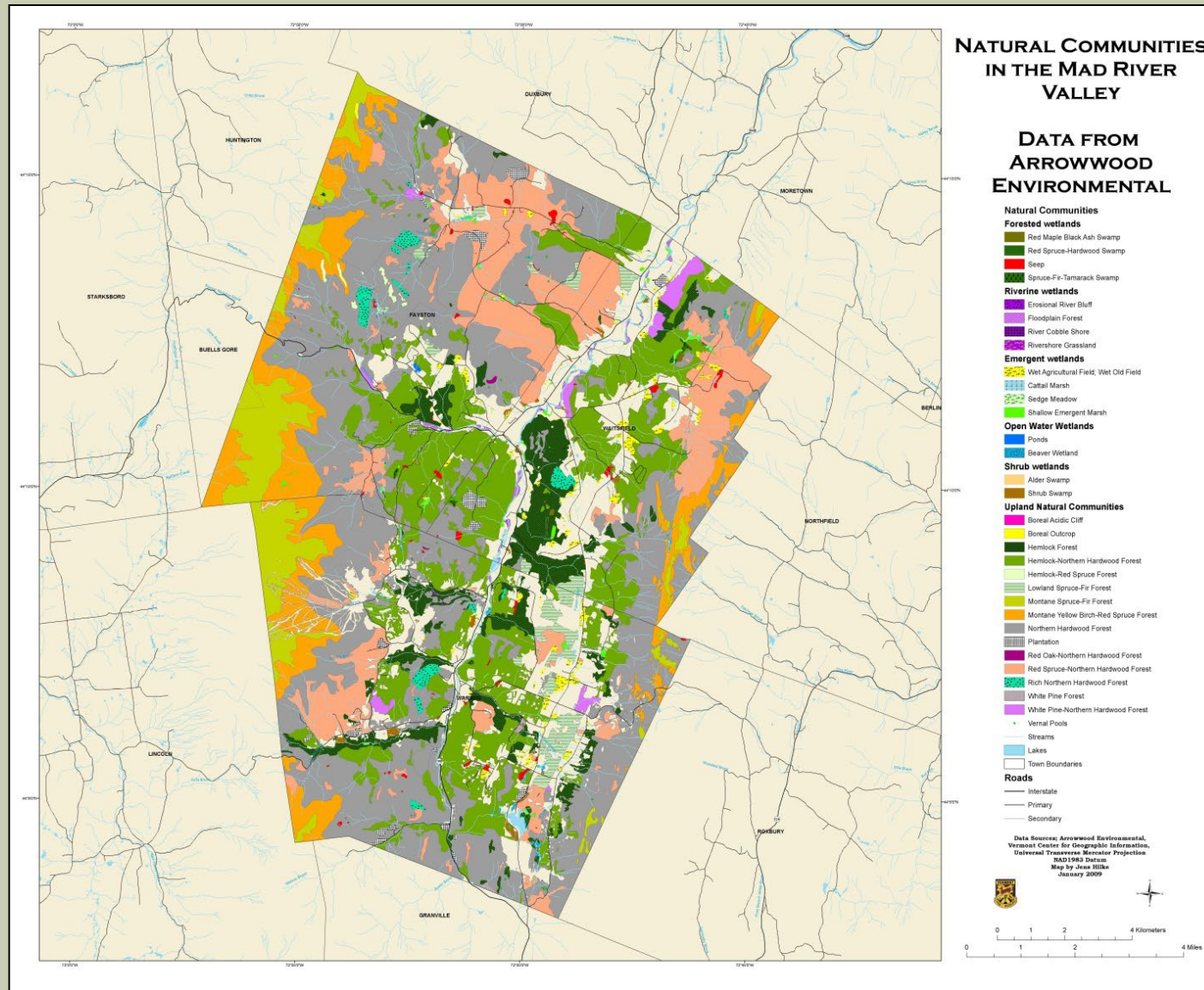


Community Scale Elements

The Community Scale
is the most useful scale
for town planning



Natural Communities



Erosion & Deposition



Inundation



Rivers

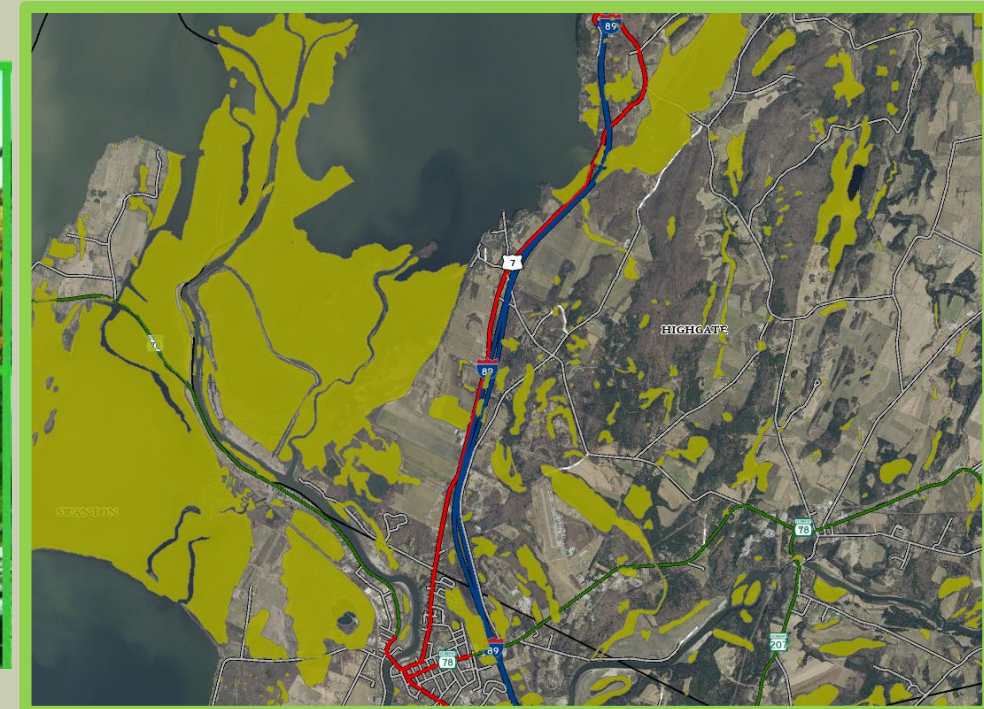
- Physical landscape creates the setting
- Human and natural communities respond to that setting

Riparian Habitats



Wetlands

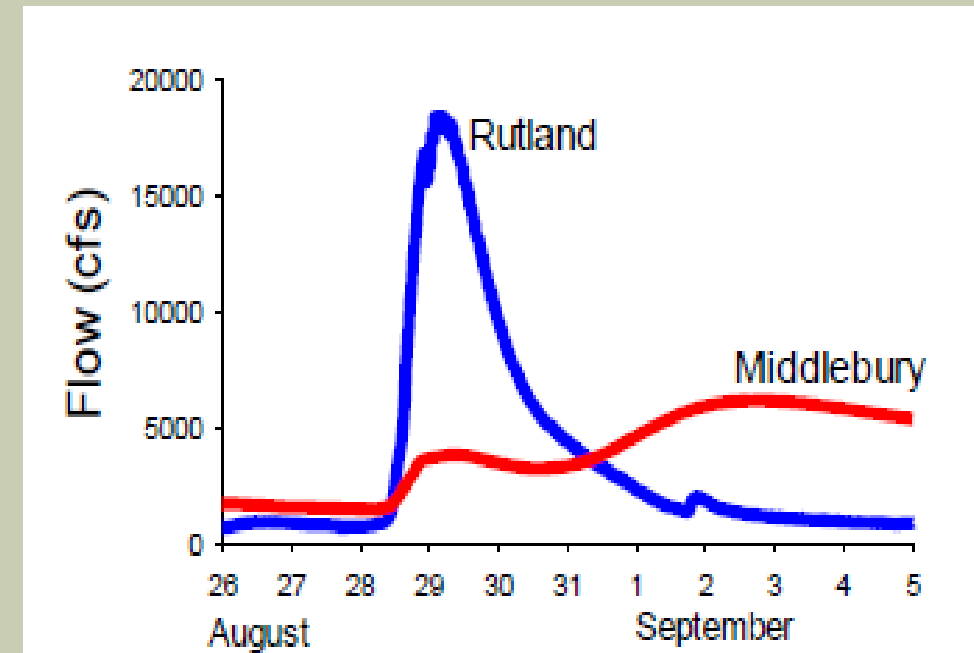
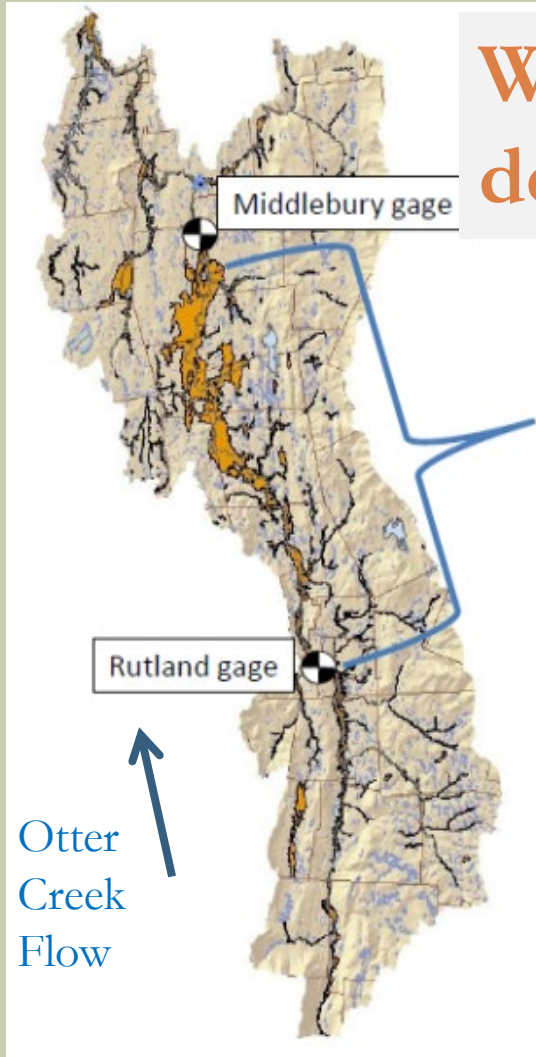
Functions & Values



Vermont Significant Wetland Inventory (VSWI)

Wetlands & Floodplains at Work

Wetlands & floodplains protect downstream communities!



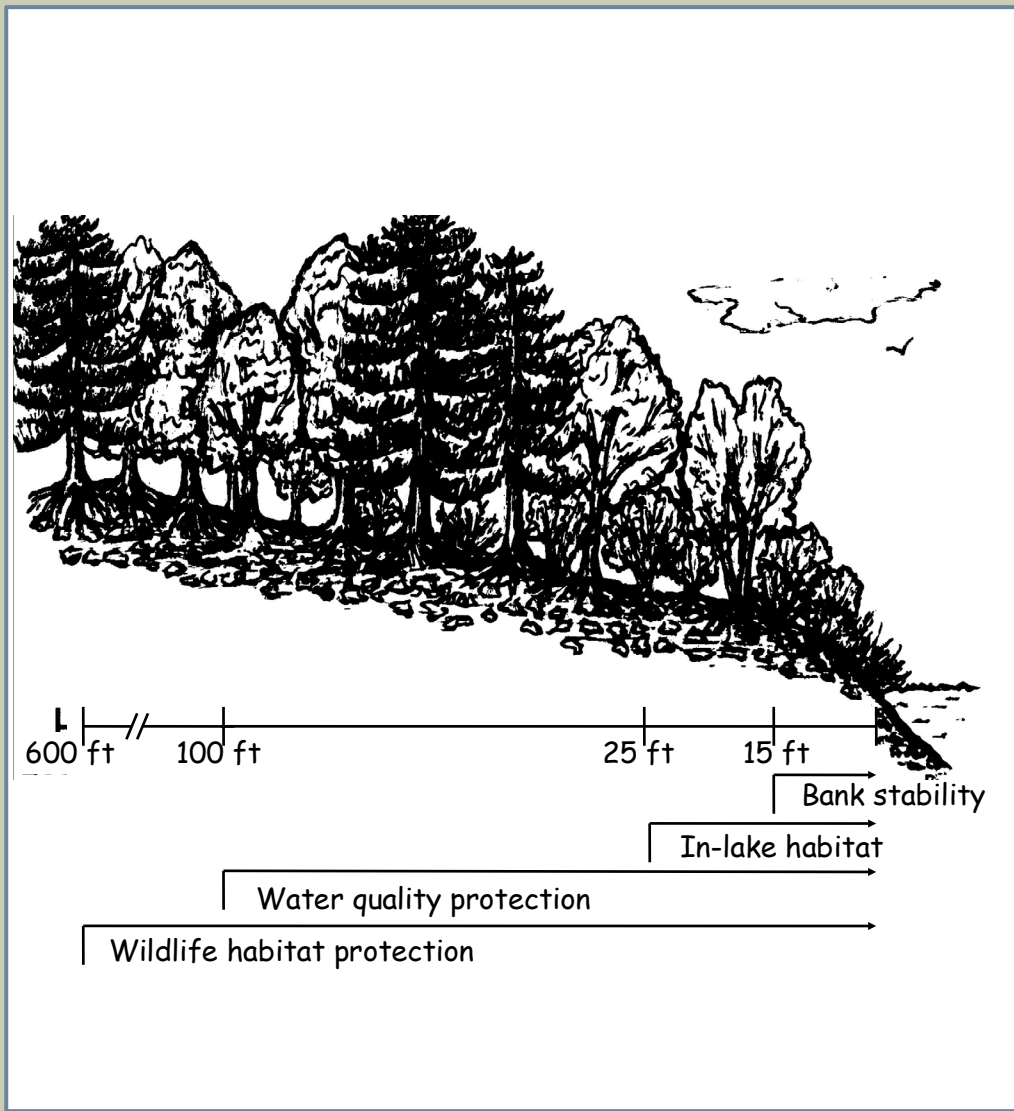
Hydrograph during Tropical Storm Irene

River Channel Management



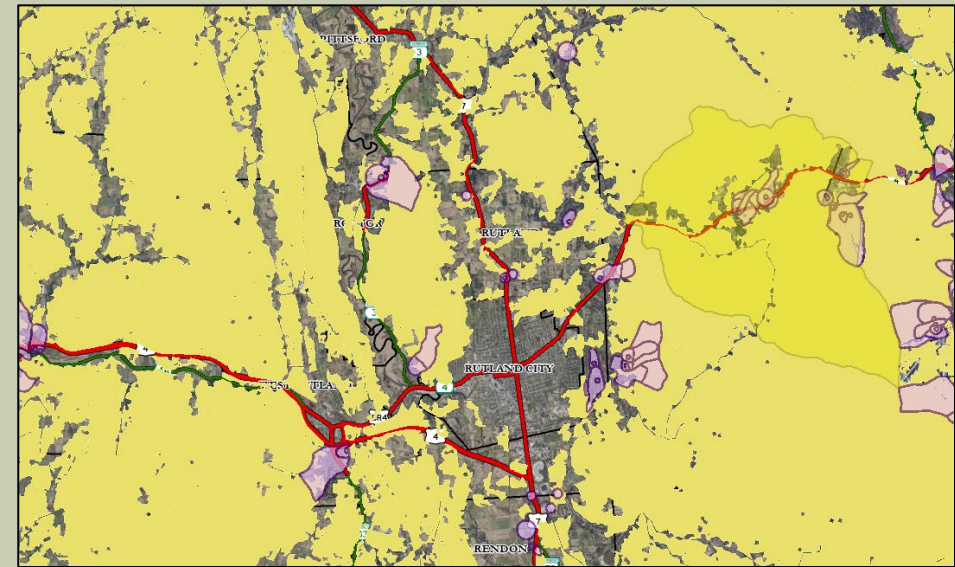
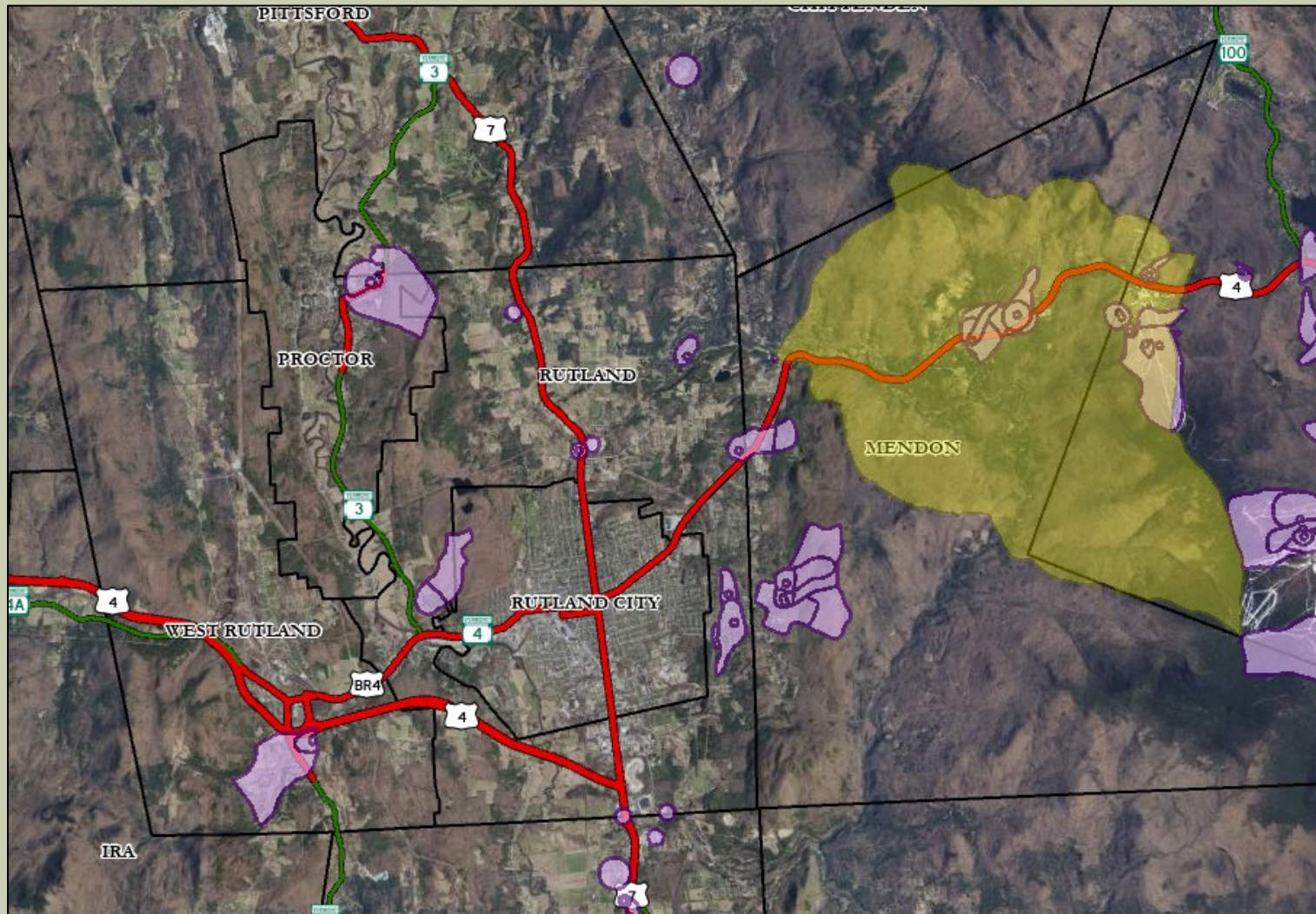
- Increases speed of river
- Causes downstream erosion
- Should only be used when necessary

Benefits of Buffers



WILDLIFE GROUP	BUFFER WIDTH (in feet)
Most wildlife	660
Hawks	330
Riparian mammals	100 to 330
Reptiles and amphibians	100 to 330 (> 1000' for some species)
Songbirds	200 to 660
Nesting waterfowl	300 to 600
Bald eagle, nesting heron, cavity nesting ducks	600
Cold water fisheries	100 to 300

Forest to Faucet



Species Scale Elements

- Some elements “fall through the cracks”
- Can occur in small areas

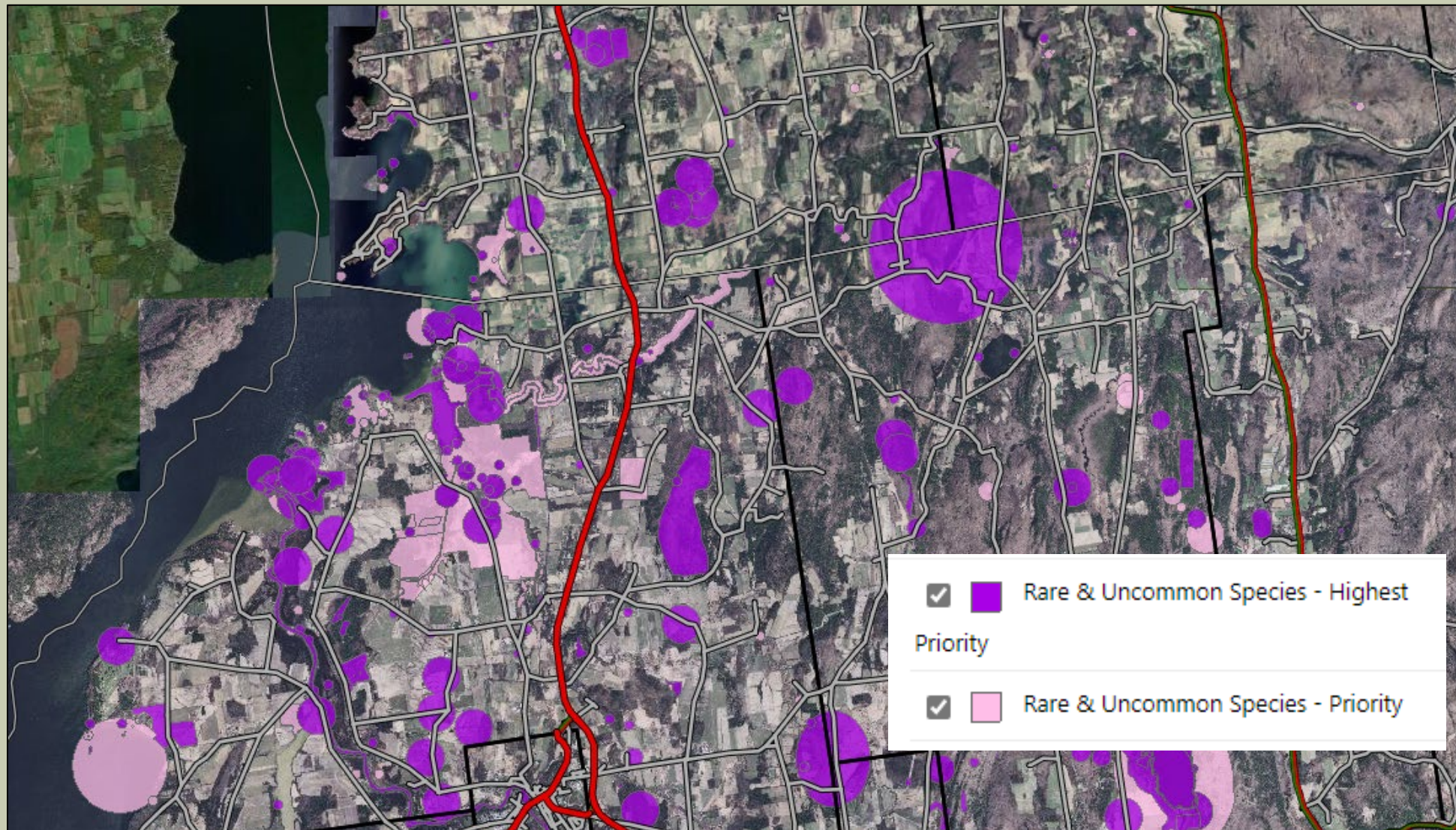
Eshqua Bog



Cobblestone
tiger beetle

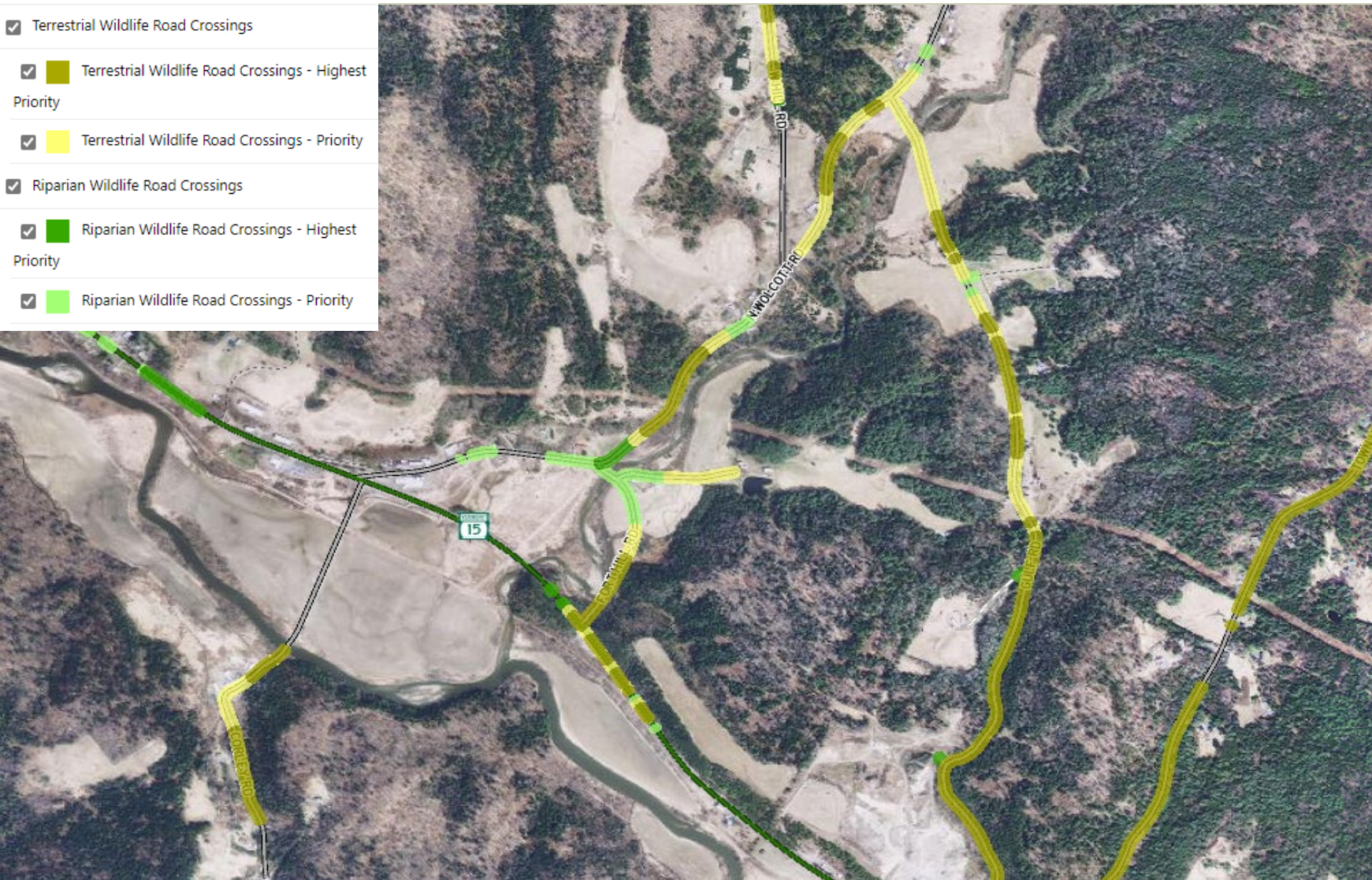


Rare & Uncommon Species



Wildlife Crossings

- Terrestrial Wildlife Road Crossings
 - Terrestrial Wildlife Road Crossings - Highest Priority
 - Terrestrial Wildlife Road Crossings - Priority
- Riparian Wildlife Road Crossings
 - Riparian Wildlife Road Crossings - Highest Priority
 - Riparian Wildlife Road Crossings - Priority



Fencing

Exclusionary Fencing
Funnels Wildlife to the
crossing



Culvert / Wildlife Passage



Google



Vermont Conservation Design

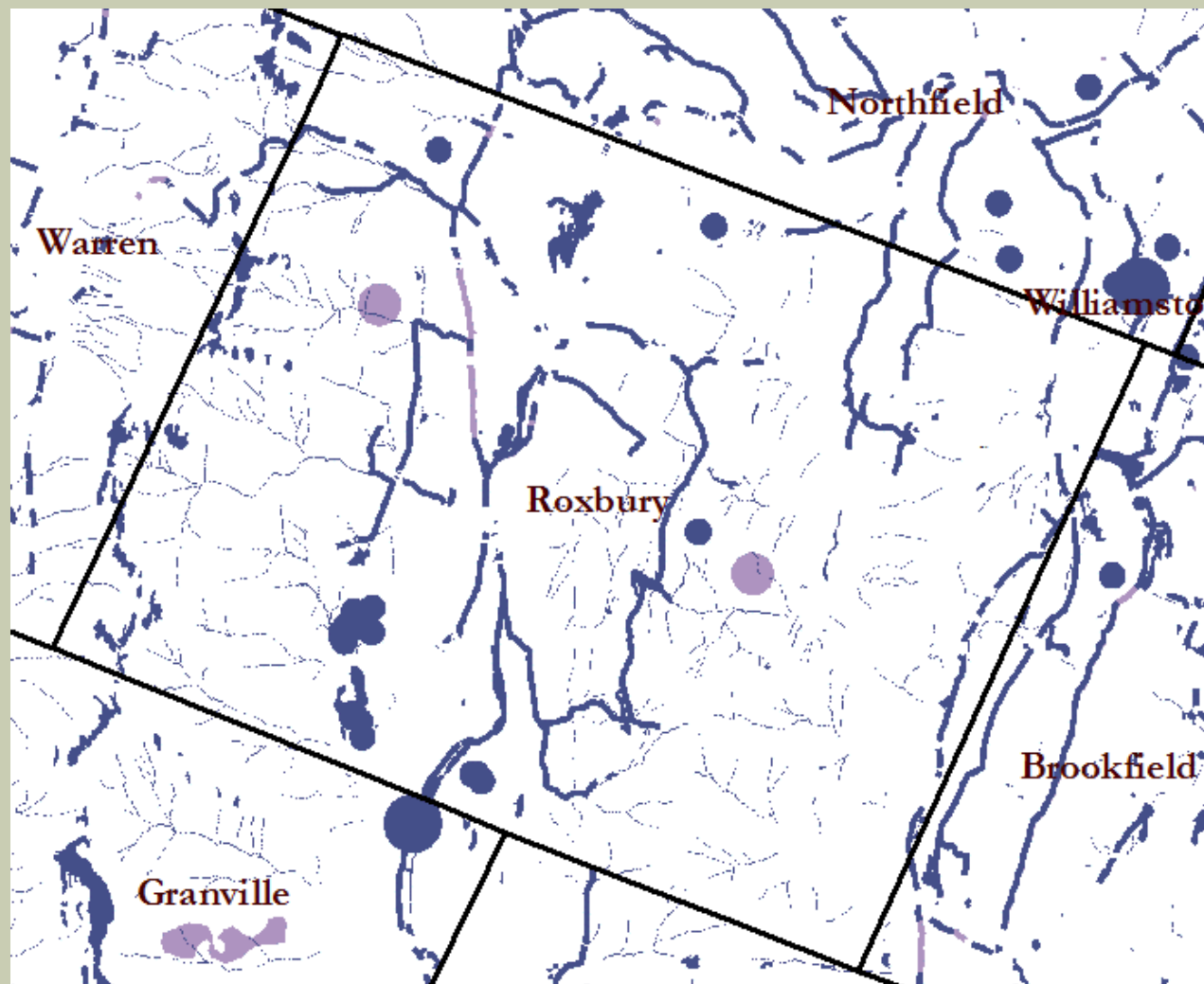


Species and Community Scale Priorities


 HIGHEST PRIORITY

 PRIORITY

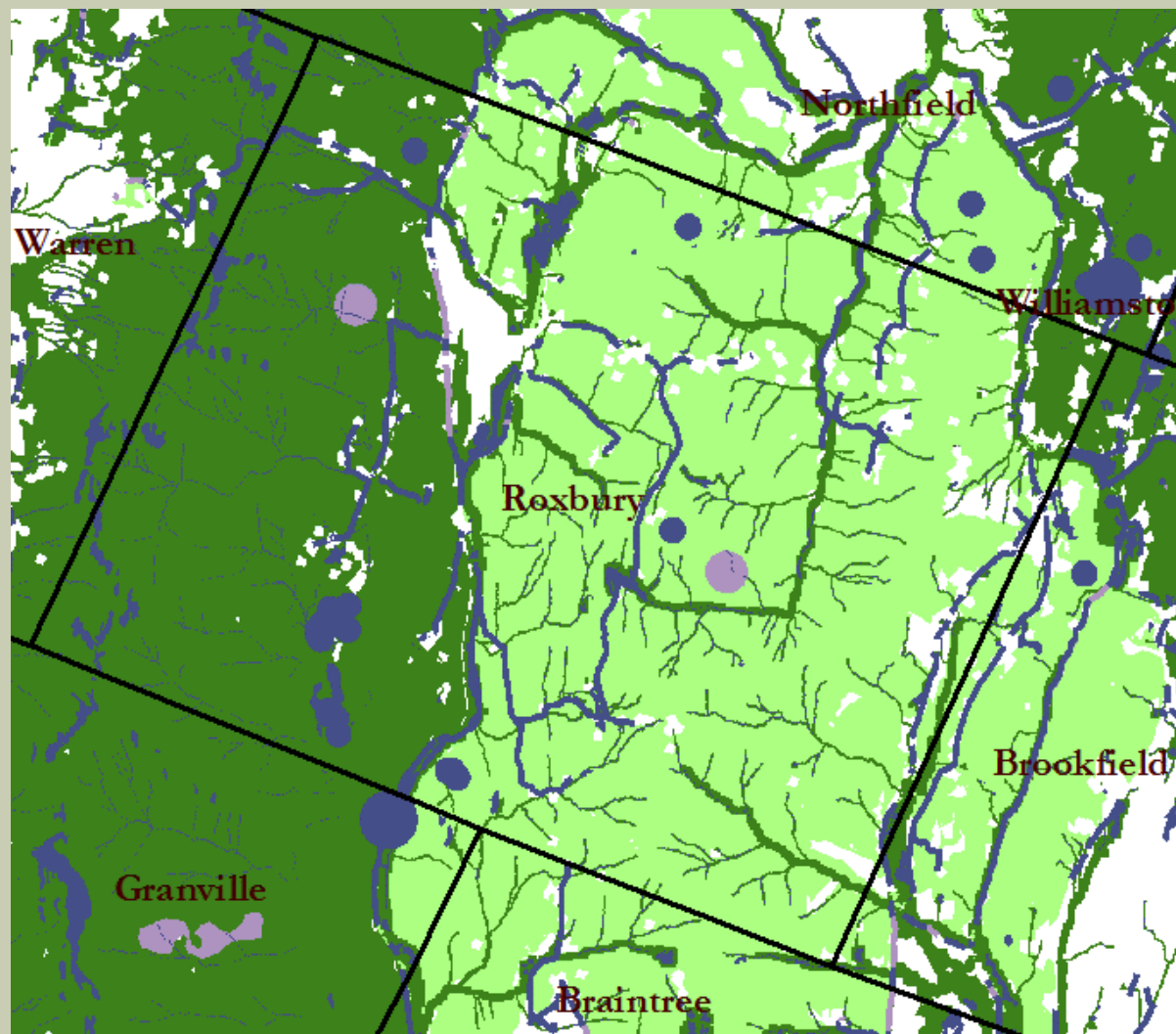
Vermont Conservation Design



Species and Community Scale Priorities

-  HIGHEST PRIORITY
-  PRIORITY

Vermont Conservation Design



Species and Community Scale Priorities

■ HIGHEST PRIORITY

■ PRIORITY

Landscape Scale Priorities

■ Highest Priority

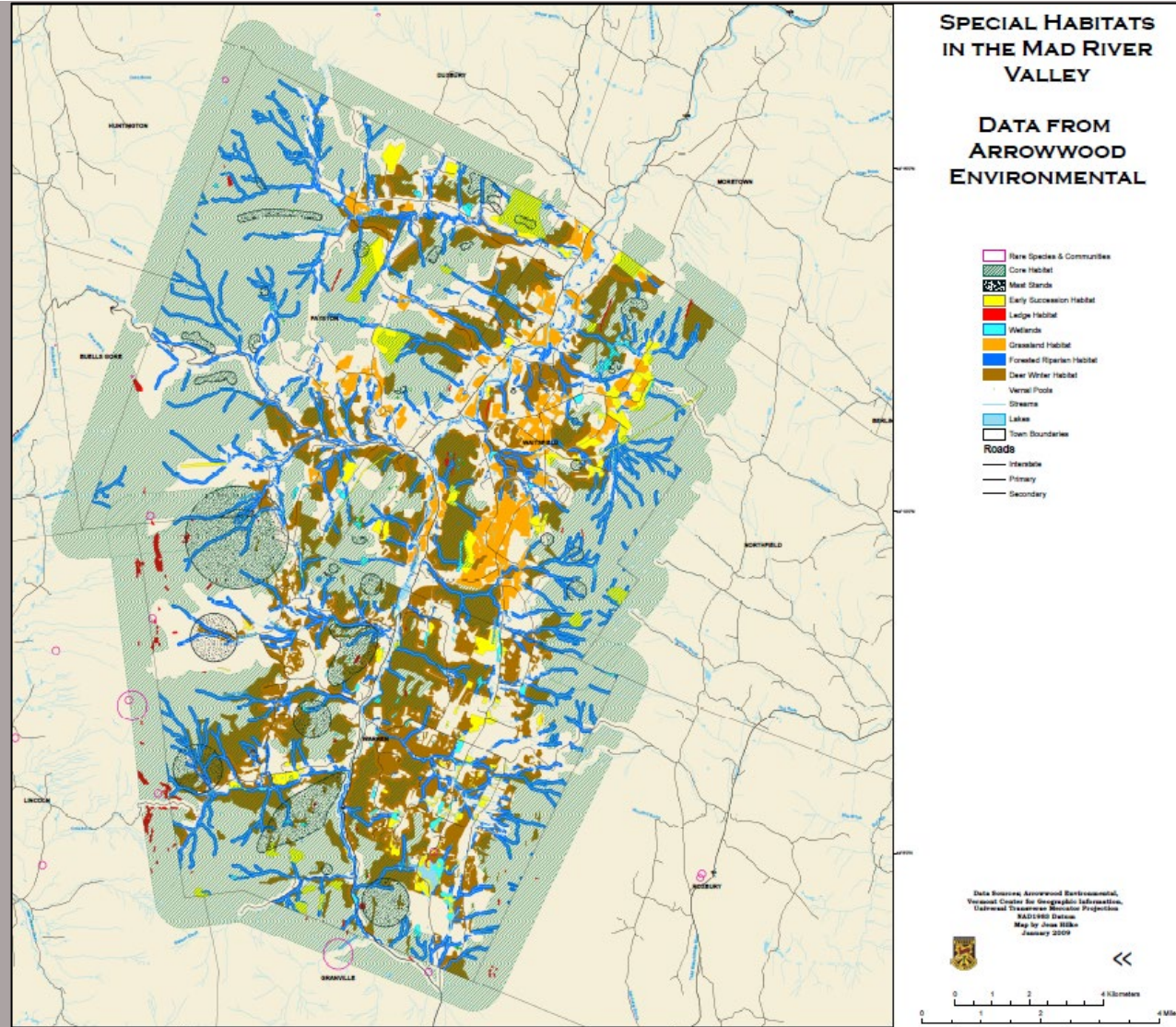
■ Priority

Even in the Village Center!

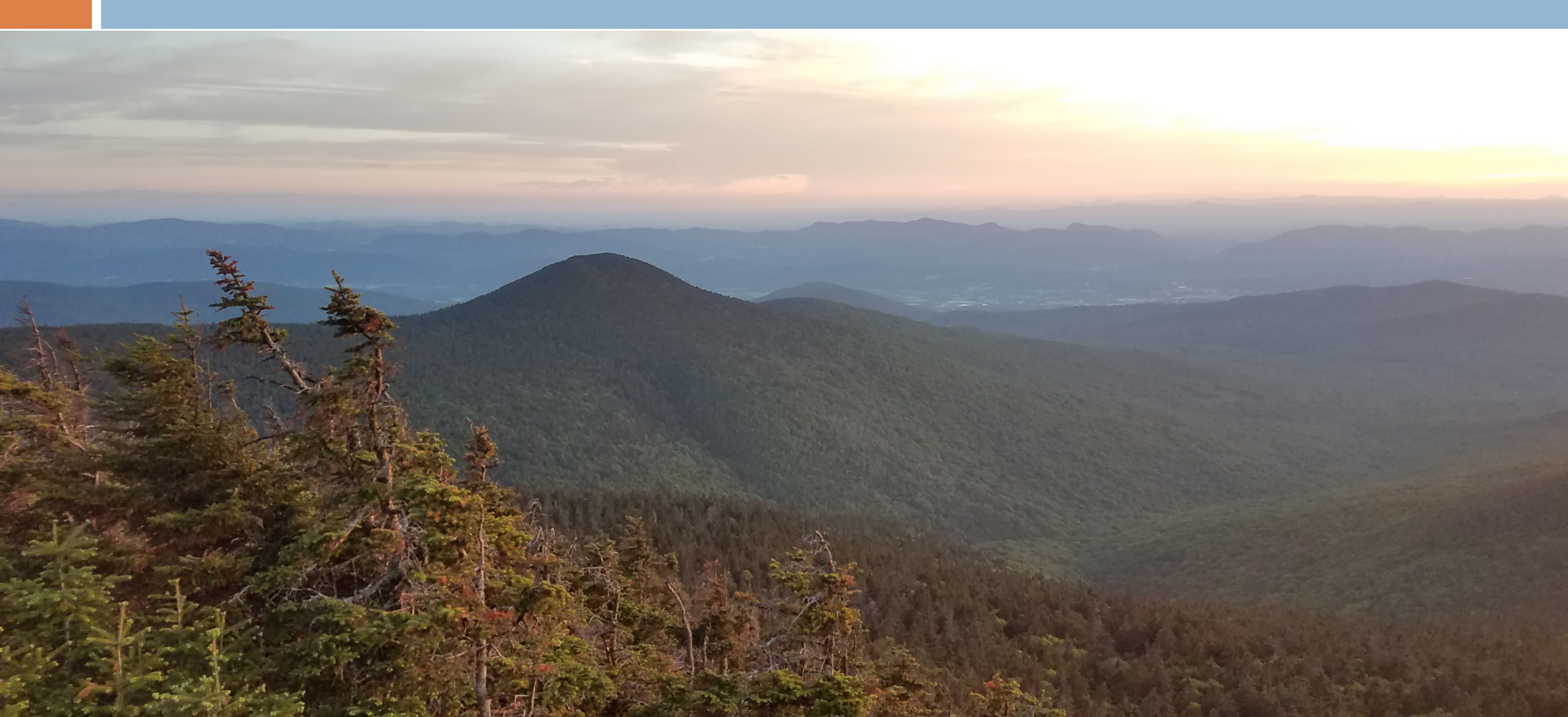


Sustainable Montpelier

Mad River Valley Region



Questions?



Activity 2: Making a BioFinder Map

