

# ENVIRONMENTAL LEADERSHIP TRAINING



## Unit 2: From Planning to Action

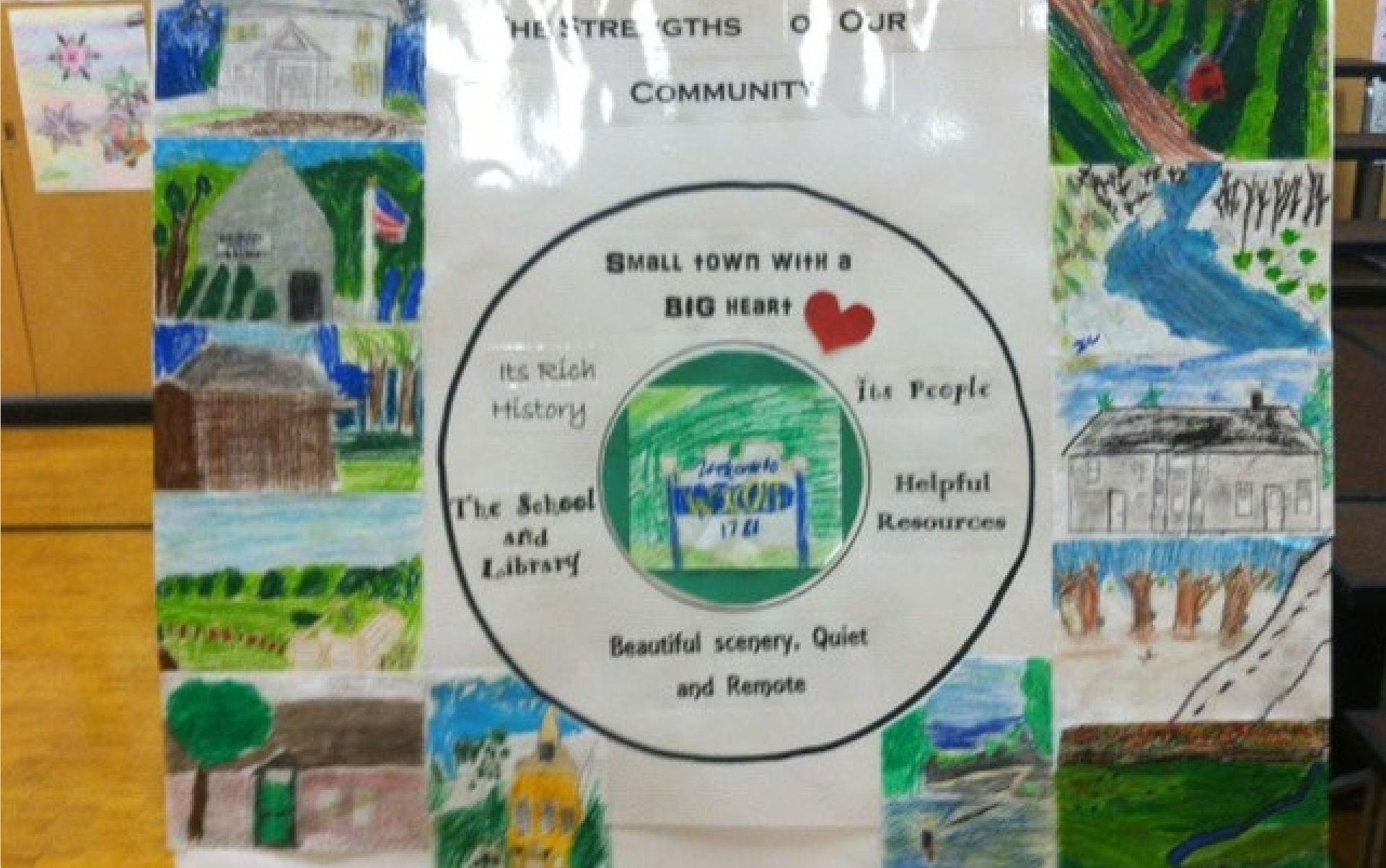


**TAKING ACTION**

# Taking Action

- **Get organized**
- **Communication and participation**
- **Identify community values**
- **Prioritize and choose solutions**
- **Design a work plan for taking action**





# Identifying Community Values



# Ways to identify community values

- ❑ The municipal plan
- ❑ Surveys
- ❑ Heart & Soul
- ❑ Interviews
- ❑ Suggestion boards in public places
- ❑ Community values mapping
- ❑ And regular old conversations!

*Stories about a place capture what's important.*

# Community values mapping: an activity to capture local knowledge

## Value Groups

-  Recreation
-  Hunting & Fishing
-  Scenic
-  Community
-  Working Landscape
-  Historic
-  Ecological



# Example: Community Values Mapping Johnson

The screenshot shows a Miro digital whiteboard interface. At the top, there are tabs for 'Boards', 'Oxford Self-Guided', and 'Johnson CVM'. The main workspace is titled 'Team 5'. On the left, there is a vertical toolbar with icons for selection, text, drawing, and erasing. The central content area is divided into three main sections:

- Text on the left:**
  - What do you love about living here?
  - Where are those most important places?
- Map in the center:** A satellite-style map of the Johnson area with various colored circles and lines overlaid, representing community values. Labels on the map include WATERVILLE, JOHNSON, and HILBERTOWN.
- Community Values Legend on the right:**
  - Community Values**
  - 1) Left click to Select the Pen tool. Choose the color from the value groups in the legend. Set the line to be thicker.
  - 2) Zoom in and draw on the map. With a mouse, click and hold while drawing. - Circle an area that you think is important for that value.
  - 3) If you make a mistake, select the arrow tool at left. click on the drawing that you want to change or erase.
  - Legend items:**
    - Recreation (Yellow circle)
    - Hunting & Fishing (Blue circle)
    - Scenic (Purple circle)
    - Community (Red circle)
    - Working Landscape (Orange circle)
    - Historic (Light Blue circle)
    - Ecological (Green circle)
  - [Instructions](#)

At the bottom of the whiteboard, there is a toolbar with icons for zooming, panning, and other navigation tools. A zoom level of 55% is indicated in the bottom right corner.

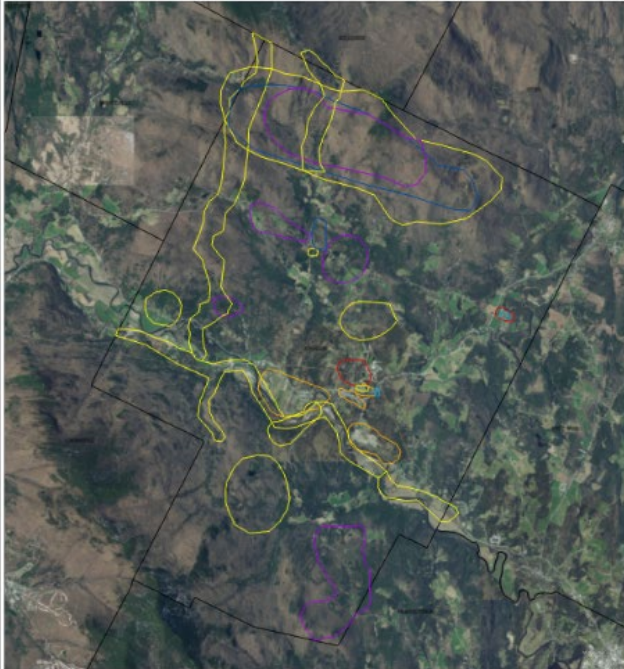
Separate zoom breakout rooms for each Team

Separate basemaps on a digital whiteboard (Miro) for each team

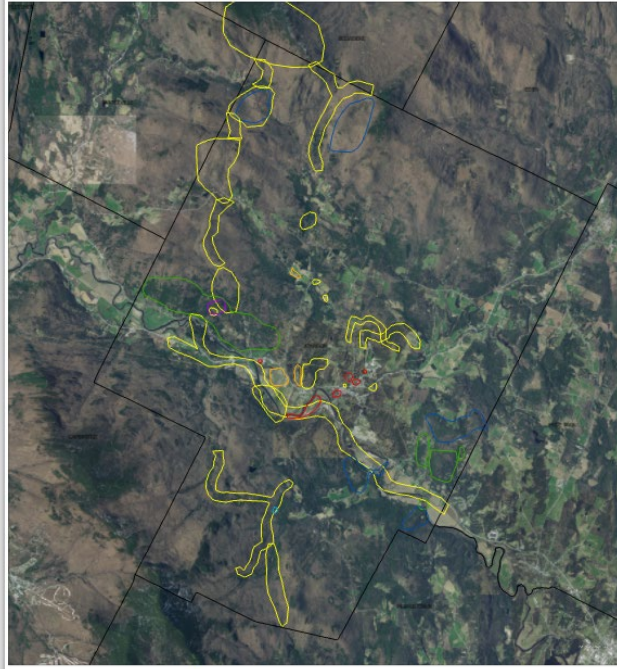


# Example: Community Values Mapping Johnson

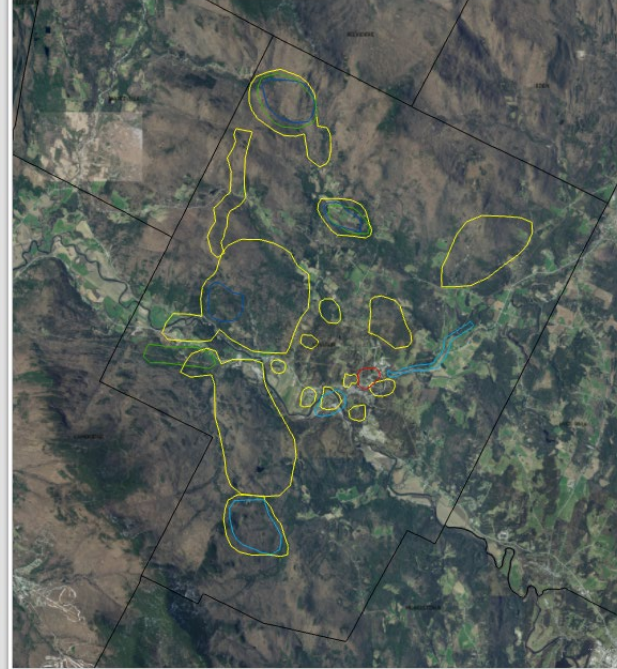
Johnson Community Values Mapping  
Small Group 1



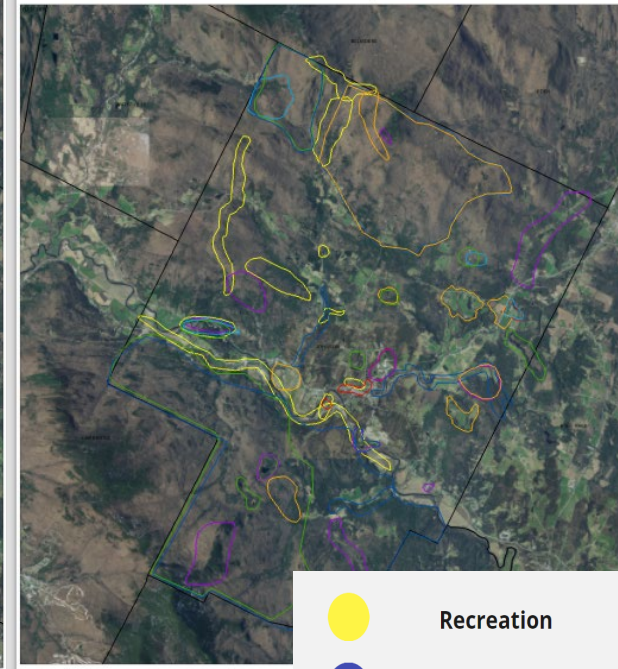
Johnson Community Values Mapping  
Small Group 2



Johnson Community Values Mapping  
Small Group 3



Johnson Community Values Mapping  
Small Group 4



- Recreation
- Hunting & Fishing
- Scenic
- Community
- Working Landscape
- Historic
- Ecological

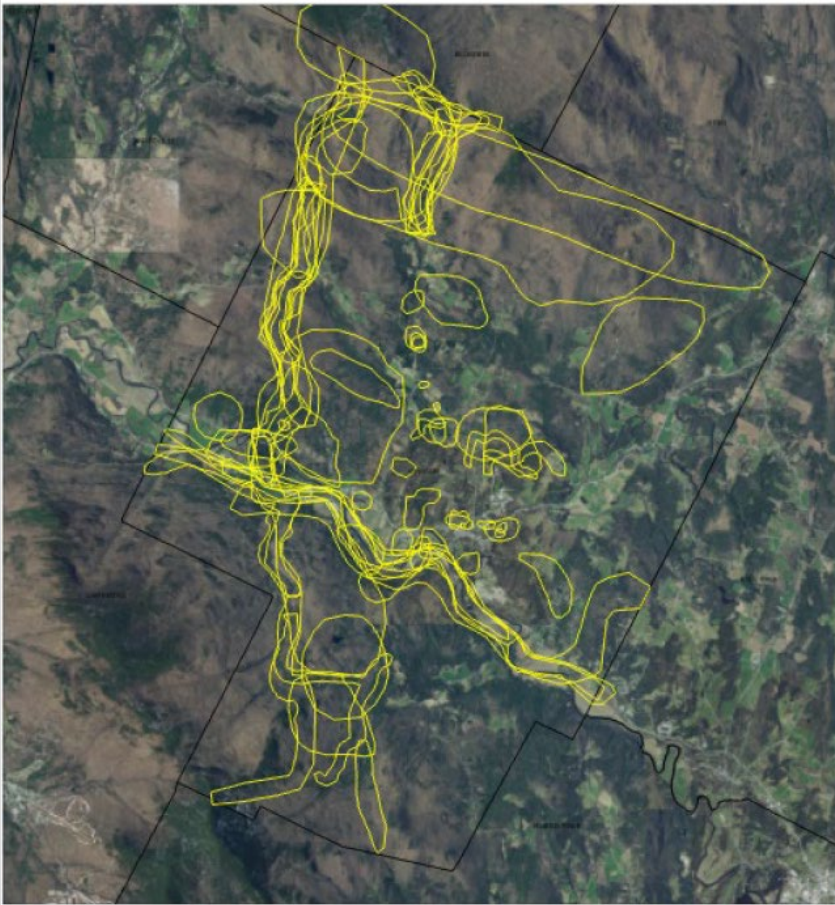
*Small Groups*



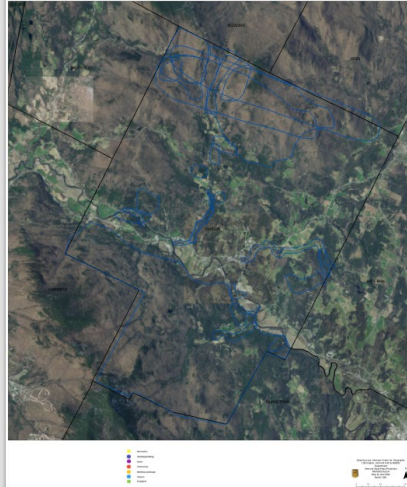
# Example: Community Values Mapping Johnson

Maps by Value Group (across all teams)

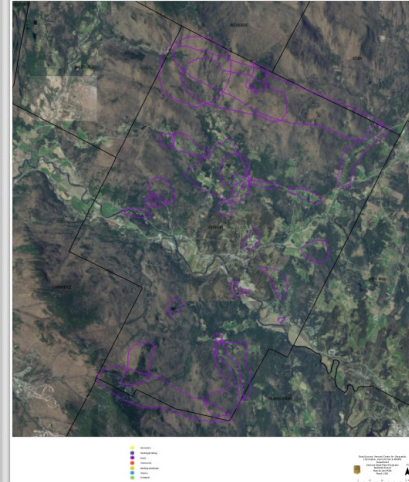
### Johnson Community Values Mapping Recreation



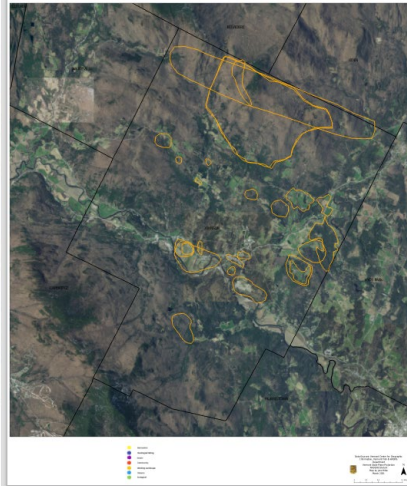
### Johnson Community Values Mapping Hunting & Fishing



### Johnson Community Values Mapping Scenic



### Johnson Community Values Mapping Working Landscapes



### Johnson Community Values Mapping Community

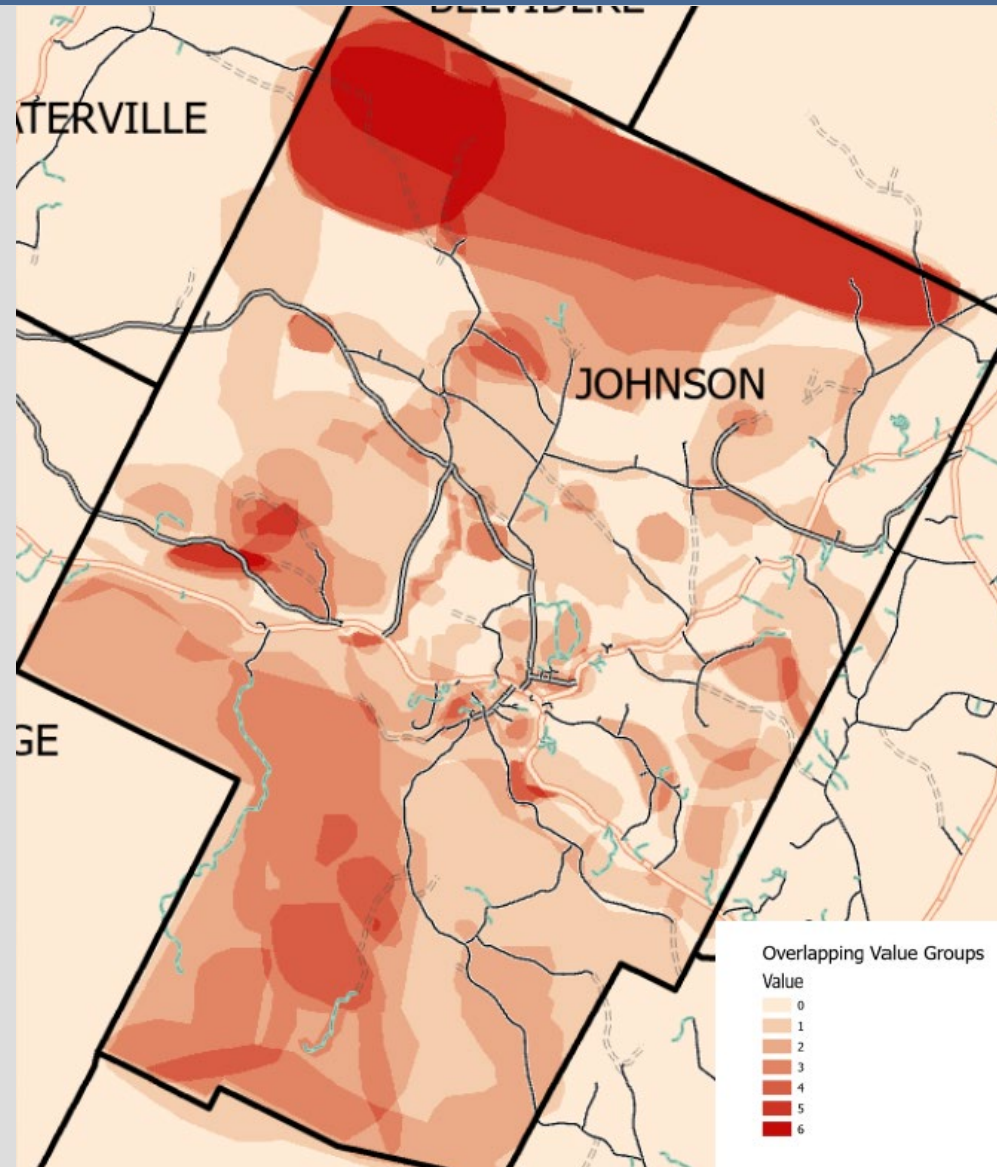


### Johnson Community Values Mapping Ecological



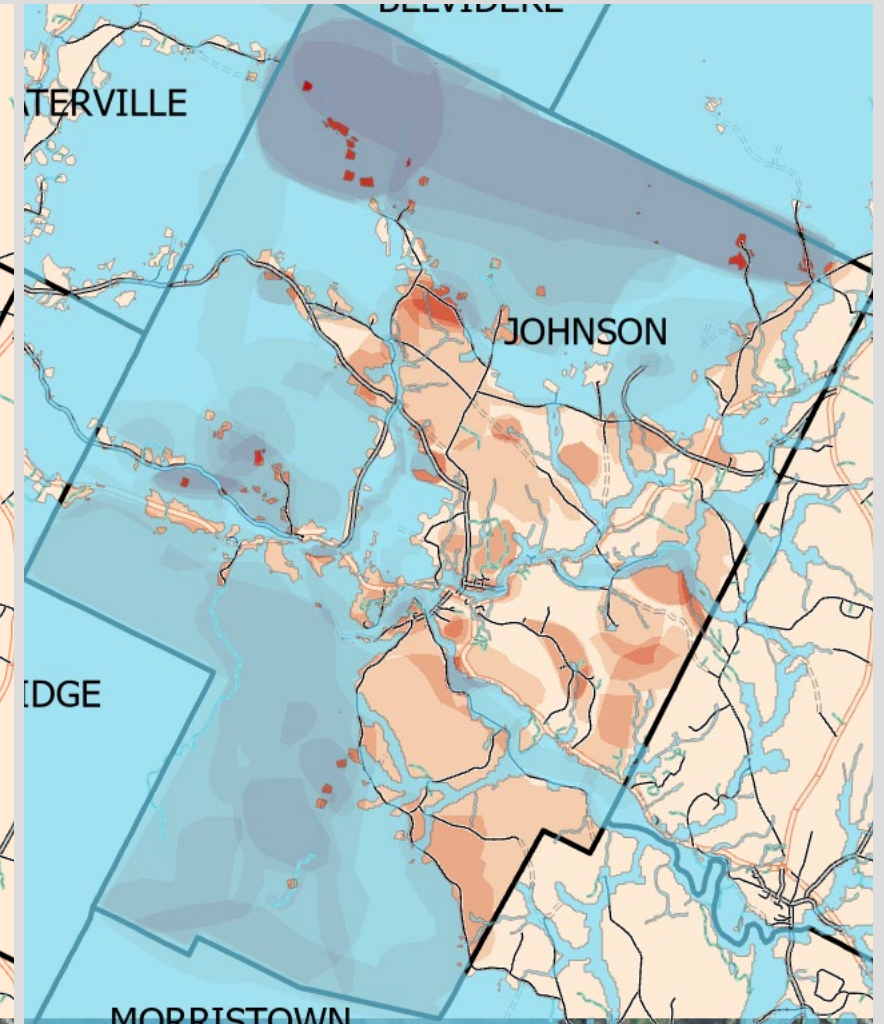
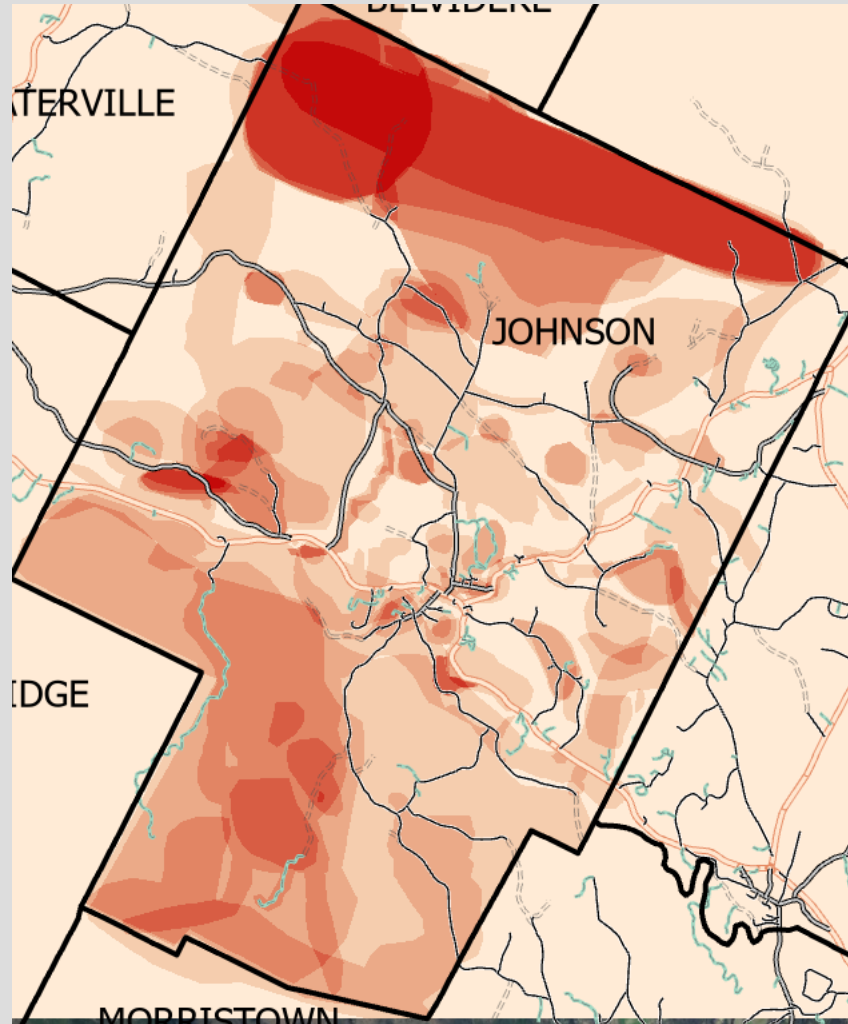
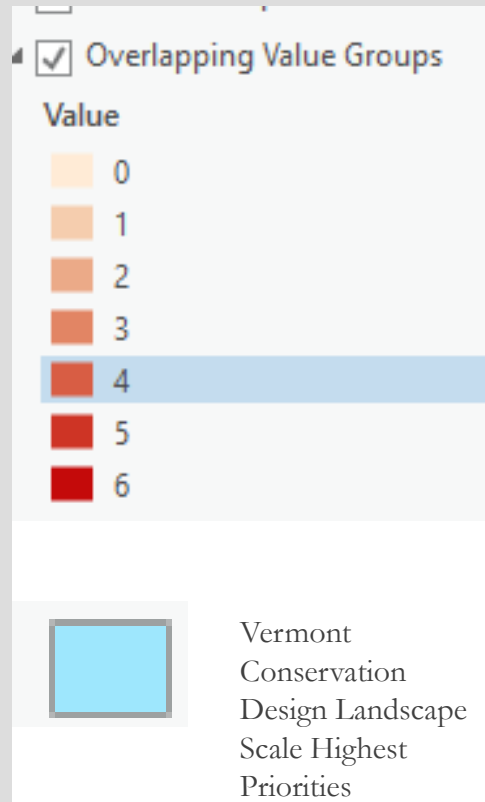
# Example: Community Values Mapping

## Johnson Overlapping Value Groups (across all teams)



# Example: Community Values Mapping

## Johnson VCD Landscape Scale Highest Priorities



# Questions?

