

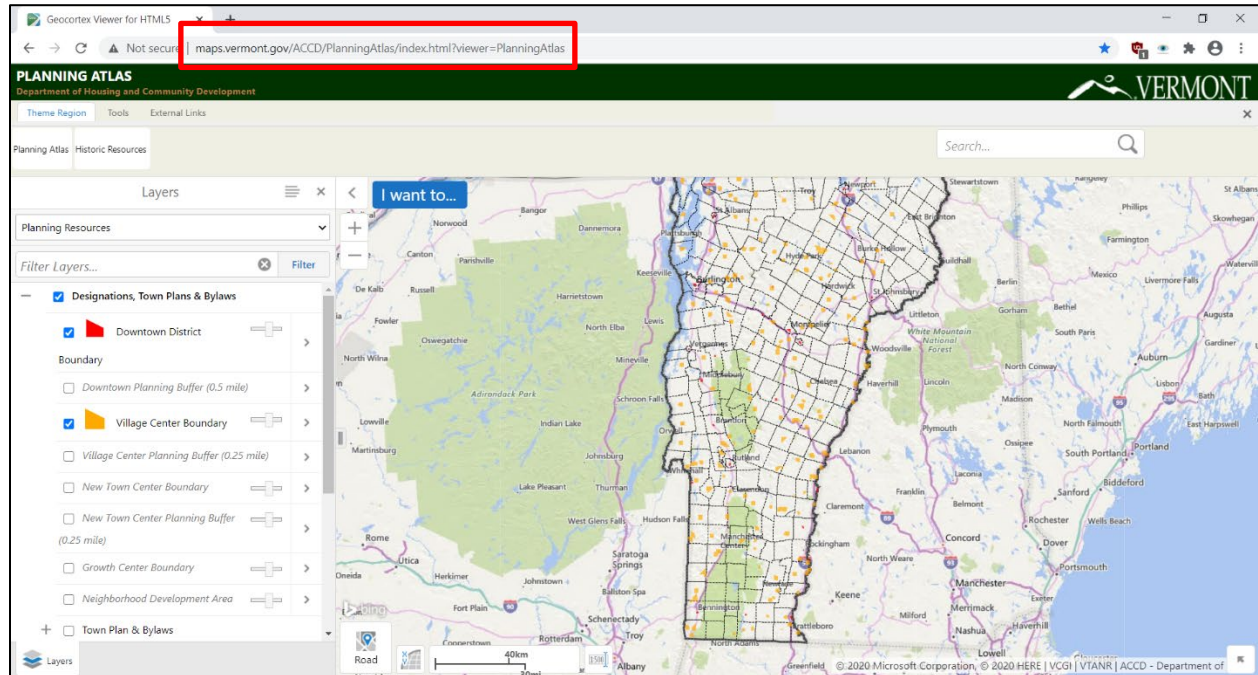
Environmental Leadership Trainings Unit 1

Homework 2

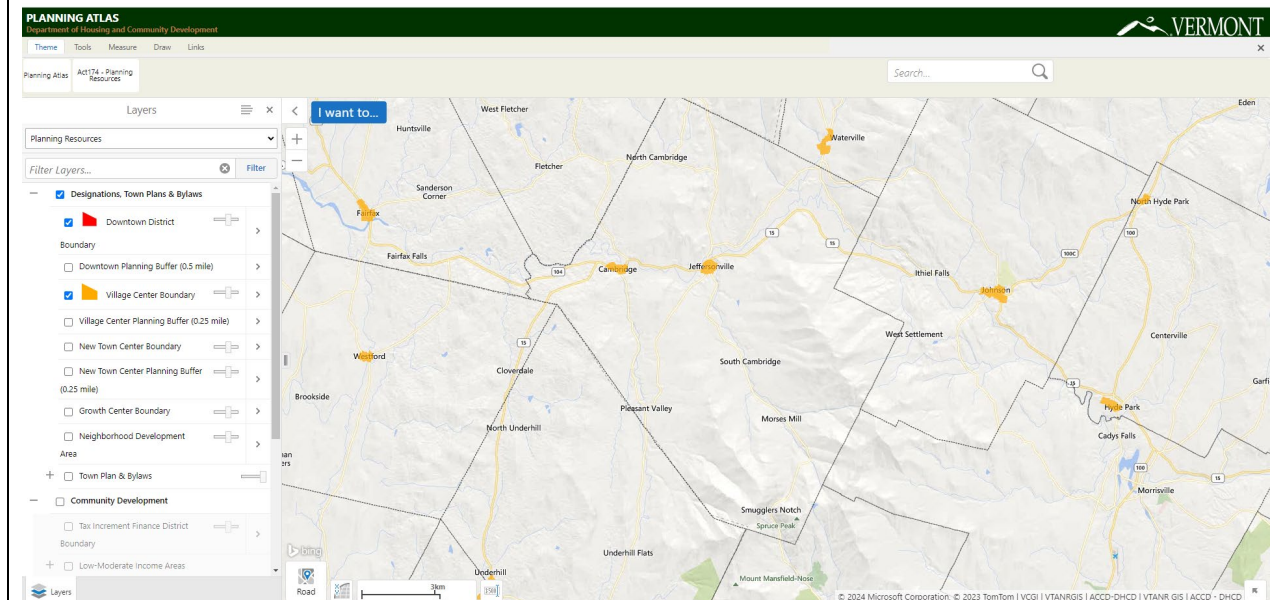
Using the VT Agency of Commerce & Community Development's Planning Atlas

Open a web browser and navigate to

<http://maps.vermont.gov/ACCD/PlanningAtlas/index.html?viewer=PlanningAtlas>

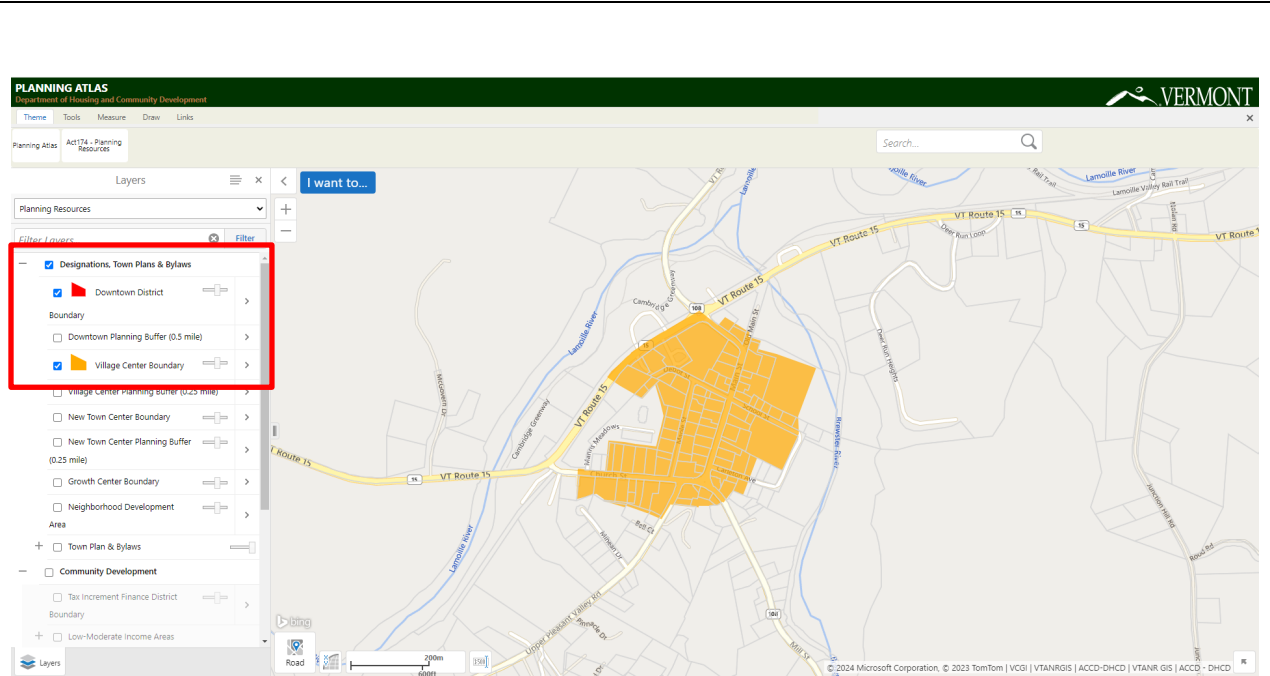


Zoom in to your village or town using scroll wheel of a mouse or the + and – keys

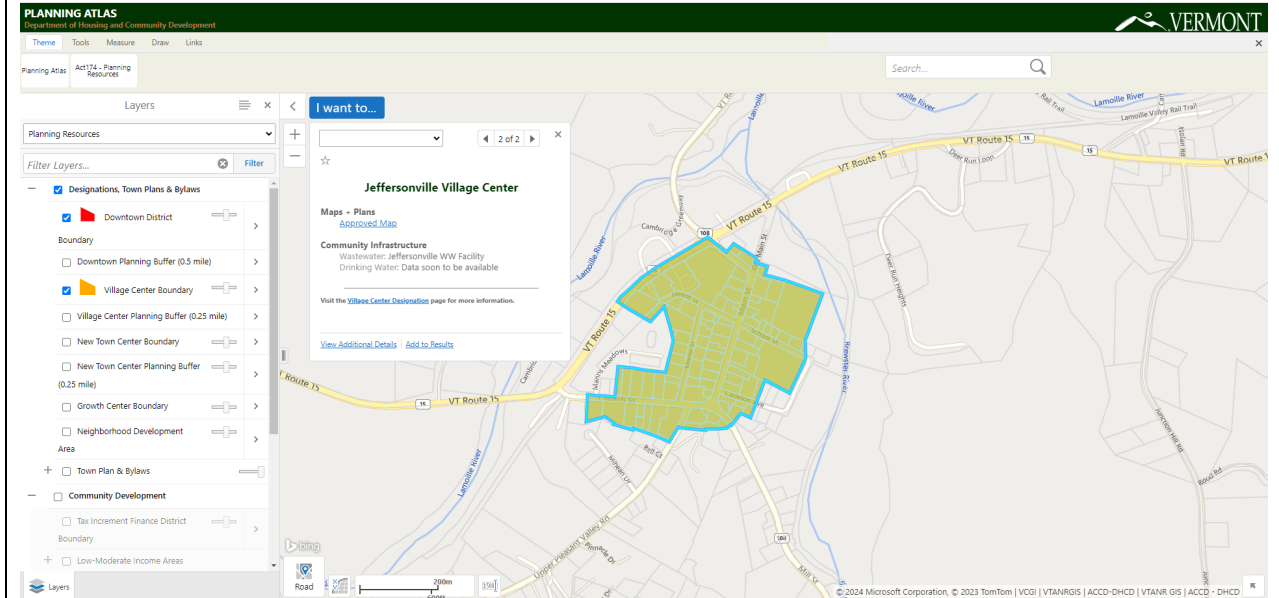


In the data layer menu, locate the **Designations, Town Plans & Bylaws** section. This section contains several useful data layers relating to designations that may exist within your town.

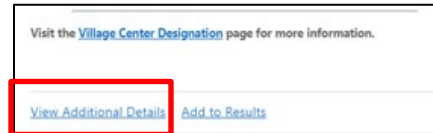
Pan around the map of your town to scan for any designation areas. Only the data layers that are turned on in the Layers menu (with a check box beside them) are displayed on the map at right.



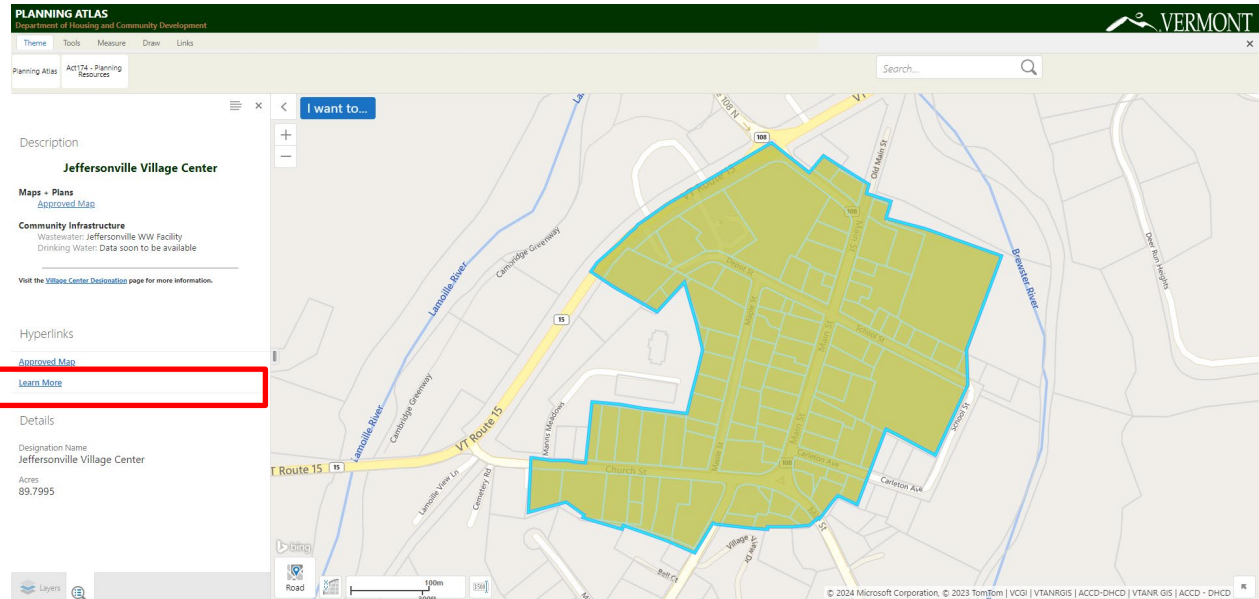
Left click on a place of interest within one of the color shaded **“Designation Areas”** to bring up more information in the results pane.



Click “View Additional Details” in the lower left corner of the results box.

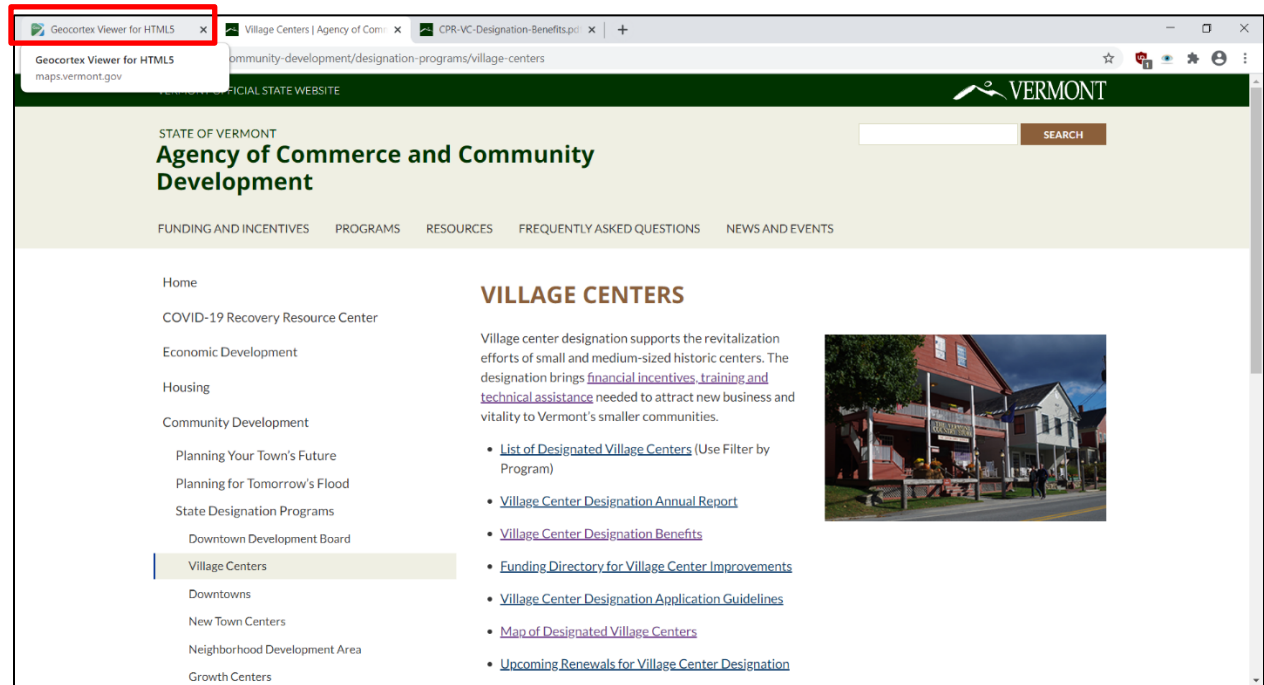


Now click the “Learn More” link to find out about the benefits of various State Designation Programs.

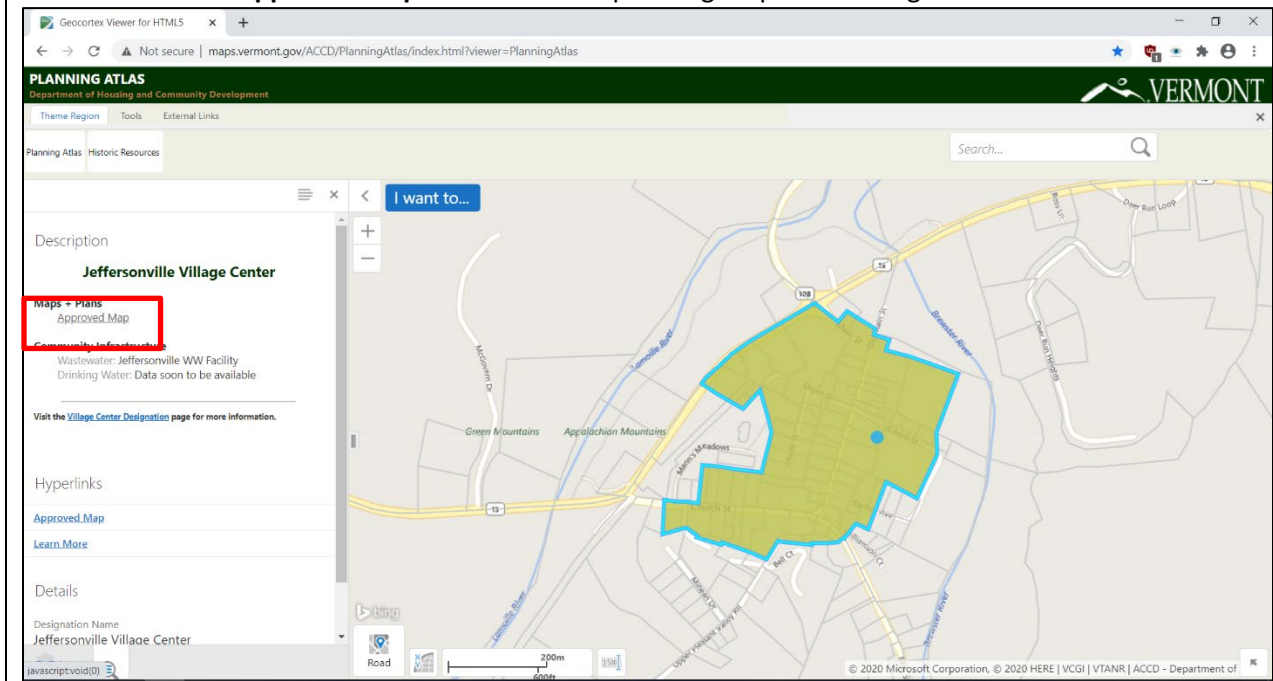


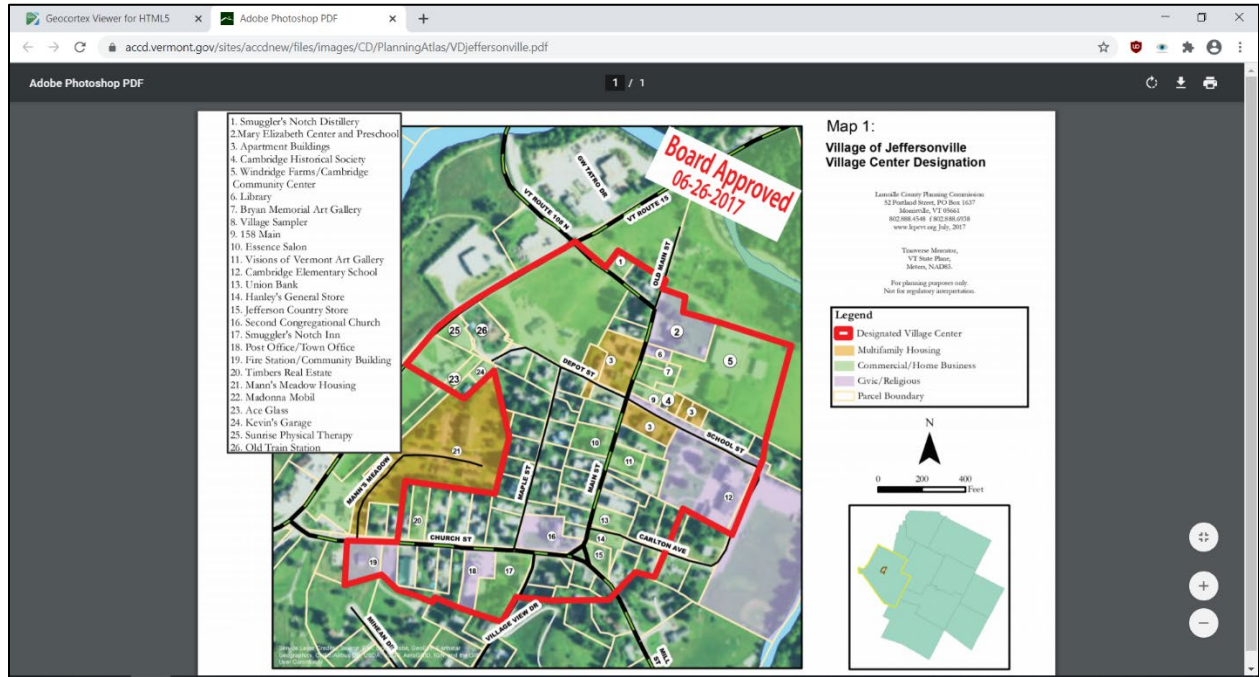
Read about the designation programs and especially the **Village Center Designation Benefits**

Click on the Tab labeled “Geocortex Viewer for HTML5” at the top of your browser to get back to the Planning Atlas.



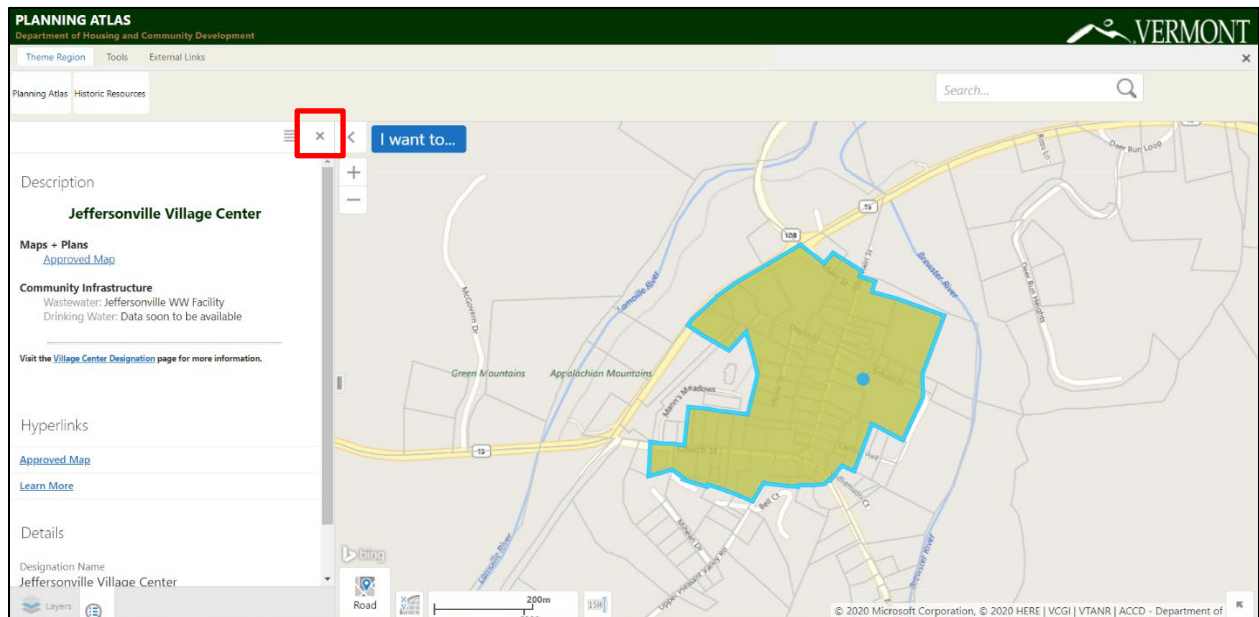
Now click on the “Approved Map” link to see the planning map of the designated area.





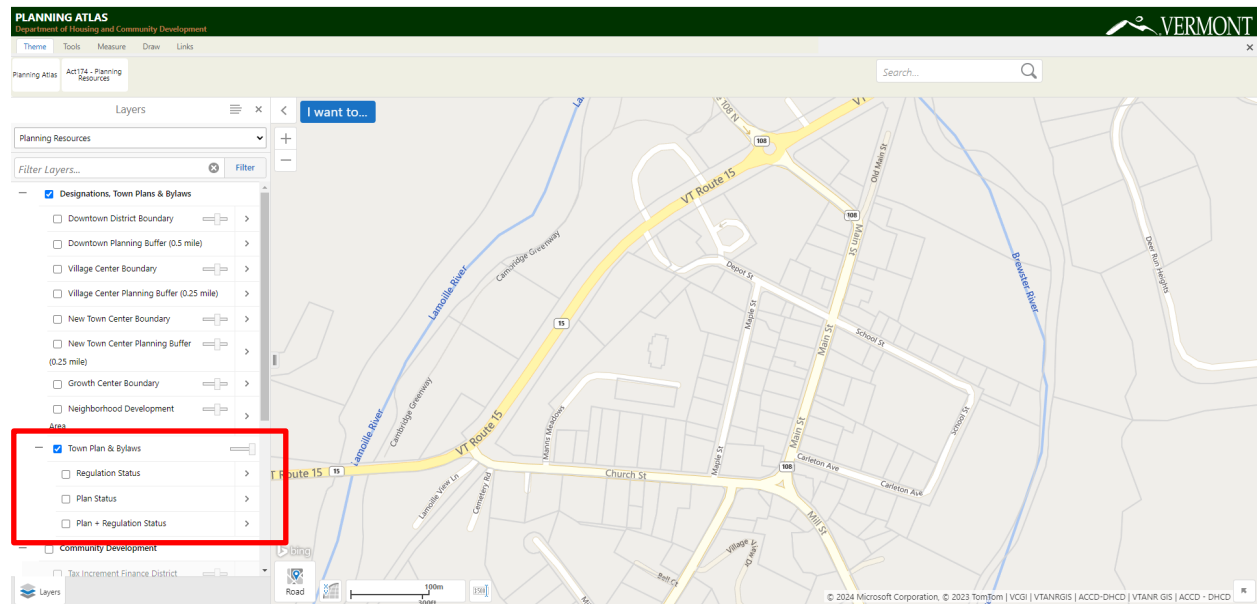
When you are finished reviewing the planning map, return to the VT Planning Atlas tab in your web browser.

Close the Village Designation results by clicking on the "X" in the top right corner of the menu bar.

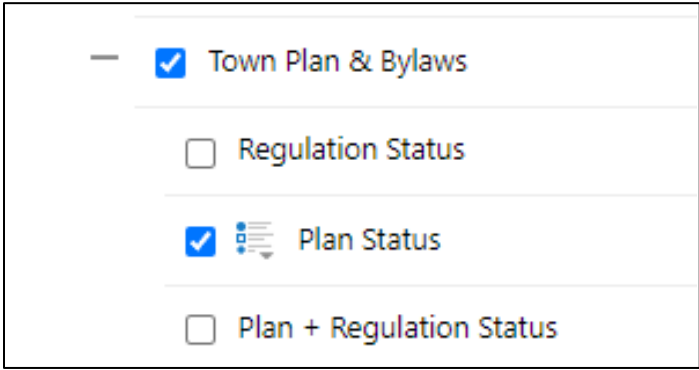


Continue exploring other Designation types in your town or area of interest. Pan around the map to see if any other designations affect your town or area of interest.

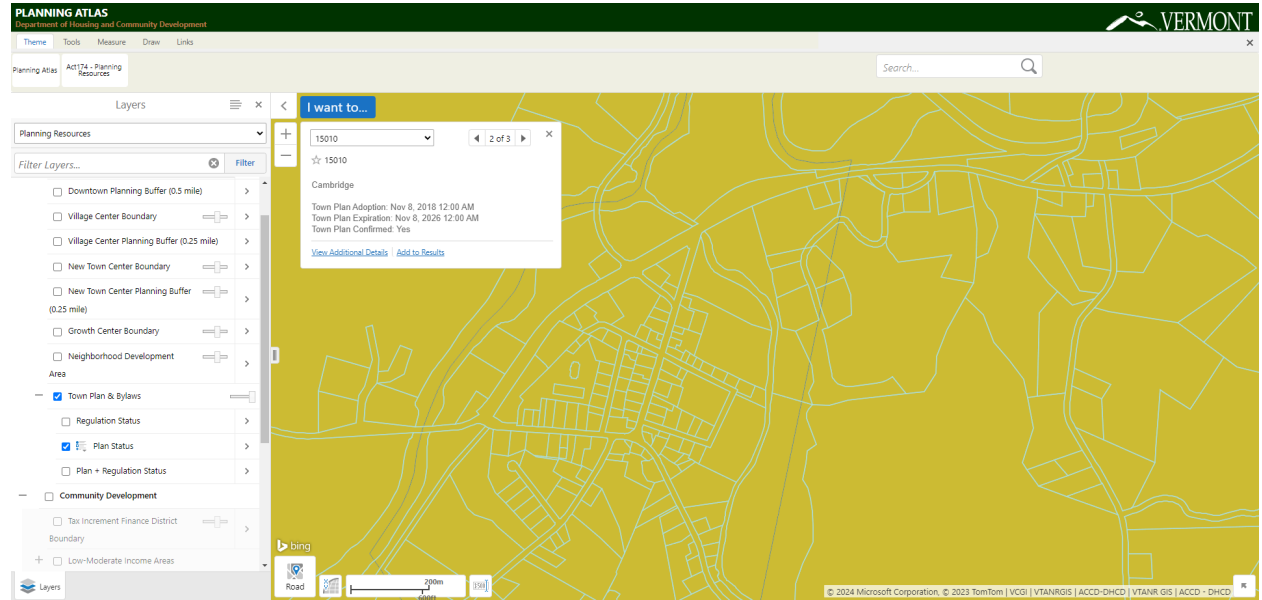
Turn off the other layers (click on the check mark box to unselect) and turn on the “**Town Plan & Bylaws**” data layer. Click the “+” to the left of the **Town Plan & Bylaws** data layer to expose hidden data layers.



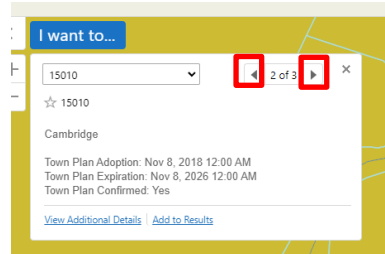
Next, try turning on different data layers to explore different attributes of your town’s regulations, plan, bylaws, and any highlighted municipal planning grant projects.



Now, **left-click** on the map. The results box here shows 3 different data results from the various data layers that are turned on.

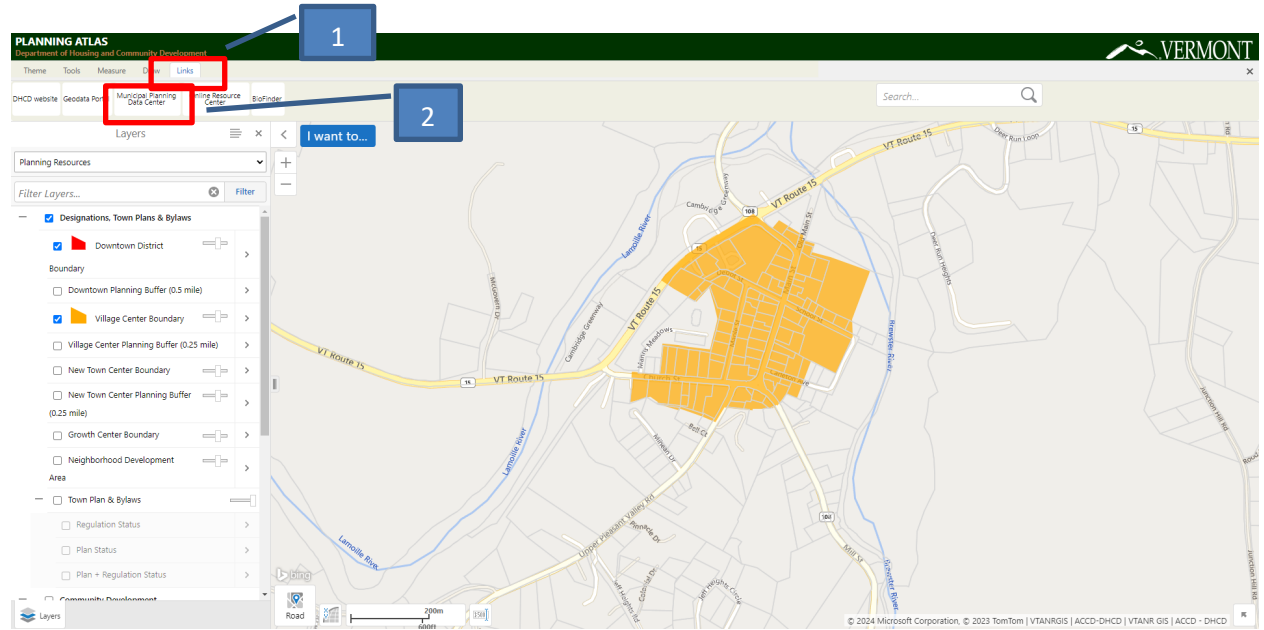


Scroll through the different results by clicking on the right and left arrows inside the results box.

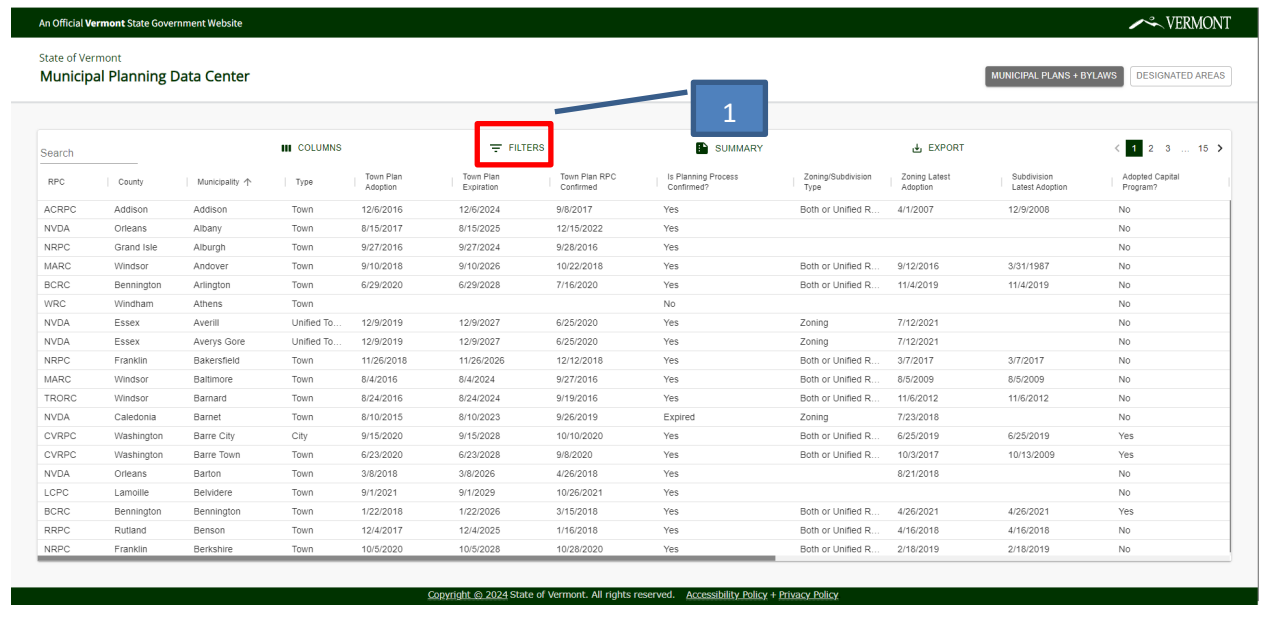


Here, you can see details on the Plan Status of Cambridge, which adopted a Town Plan in 2018 that will be in effect until 2026. Your results box may look a little different, depending on how many and which data layers are turned on now.

The Planning Atlas also contains links to other valuable resources. Click the **“Links”** tab and then click the link to the [Municipal Planning Data Center](#).



Once the database opens in your web browser, find your town by using a filter.



An Official Vermont State Government Website

State of Vermont
Municipal Planning Data Center

MUNICIPAL PLANS + BYLAWS DESIGNATED AREAS

Search

COLUMNS FILTERS SUMMARY EXPORT

RPC	County	Municipality	Type	Town Plan Adoption	Town Plan Expiration	Town Plan RPC Confirmed	Is Planning Process Confirmed?	Zoning/Subdivision Type	Zoning Latest Adoption	Subdivision Latest Adoption	Adopted Capital Program?	
		Municipality	contains	Panton	3/24/2017	10/24/2025	2/14/2018	Yes	Both or Unified R...	6/10/2007	6/1/2001	No

Copyright © 2024 State of Vermont. All rights reserved. Accessibility Policy + Privacy Policy

Pan to the right to see all the information about the selected town

When you are finished with the Database, return to VT Planning Atlas tab on your web browser.

Explore other datasets in the [Planning Atlas](#) by expanding the group in the layers menu (click on the + sign) and turning on layers (by checking or unchecking boxes).

PLANNING ATLAS
Department of Housing and Community Development

Home External Links

Initial View Identify Print Export

Distance ACCD Disclaimer

Search...

Layers

Planning Resource Atlas

- Municipal Planning Grant Project
- TIF District Boundaries
- Boundaries
 - VT State Boundary
 - VT Towns
 - Regional Planning Commission Bou...
 - Parcels (unofficial data)
 - Natural Resources and Physical Features**
 - Conserved Lands
 - River Corridors (Jan 2, 2015)
 - Rare Threatened Endangered Species
 - Flood Hazard Areas (Only FEMA-digiti...
 - Soil - Prime Agricultural

1. Expand the group

2. Left click on a feature (that is turned on) to learn more about it.

Information popup: ...ation by best available data. Not shown: 50' setback on perennial streams with watersheds < 2mi2). For more information, please visit out Frequently Asked Questions page. Vt_River_Corridors_01_02_2015. Data provided by the Vermont Agency of Natural Resources. View Additional Details | Edit Feature

bing

Layers

© 2017 HERE, © AND, © 20

Congratulations! You have completed this homework.